

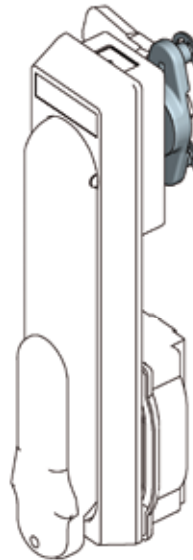


Info

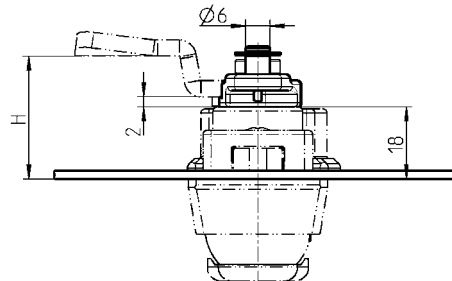
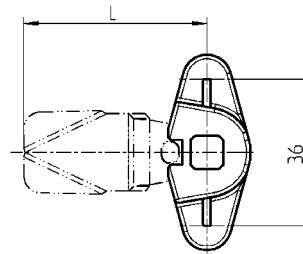
1 Quarter turns

2 Rod controls

3 Locking systems



Stroke 18 mm



Attention:

By using the rod control the H-dimension of the cam increases by 2 mm

Note:

The ramp increases the compression distance of the lock by 4 mm.

Further parts see page

- Cam (GH=18) 1C-120
- Ramp 1C-170

- Rod

inside 3ZB-120

- Bearing bush 3YB-120
3YB-140

Rod control zinc die, zinc plated, circlip m.s. zinc plated

1107-U246

Rod control AISI 316

1107-U246-PH