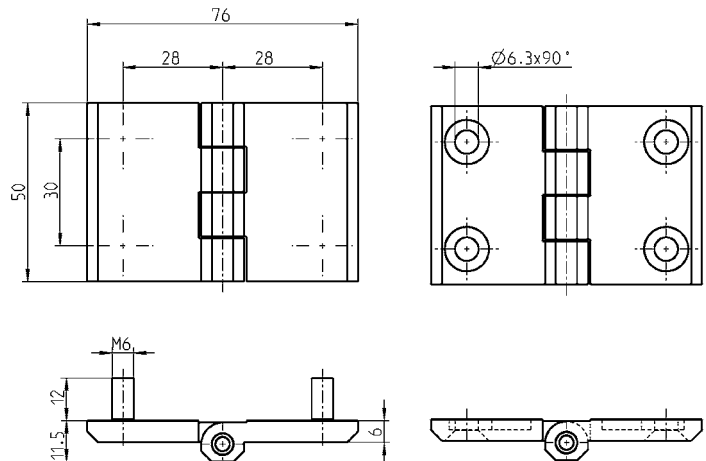
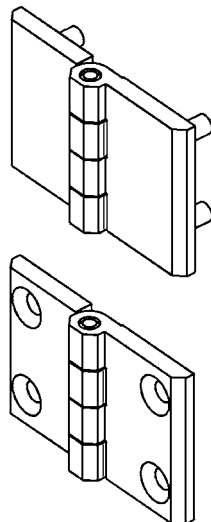
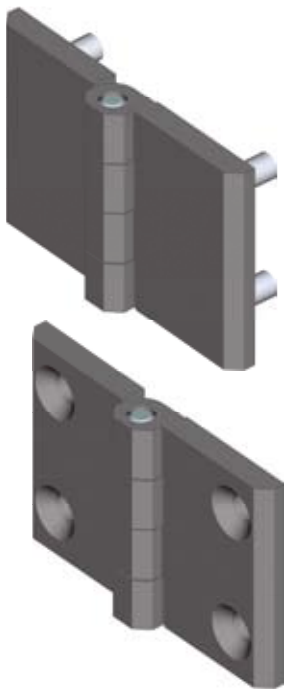


Hinge zinc die white aluminium powder coated, RAL 9006; hinge pin m.s. zinc plated

3060-U380-BK



270° screw-on hinge



Screw-on hinge zinc die or stainl. steel, threaded studs M6 stainl. steel

	Pin	threaded stud M6	for countersunk screw M6 (2D-nut possible)
zinc die chrome pl.	stainless steel	1056-U15	1056-U17
zinc die black p.c.	stainless steel	1056-U16	1056-U18
AISI 316	stainless steel	-	1056-U17-PH