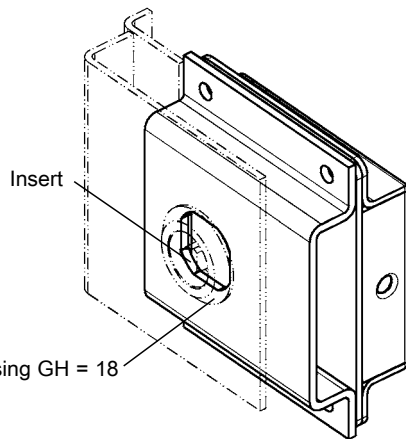
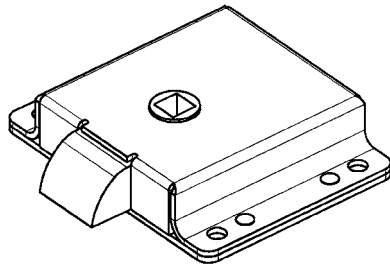
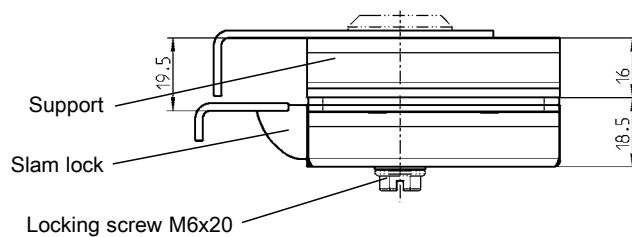
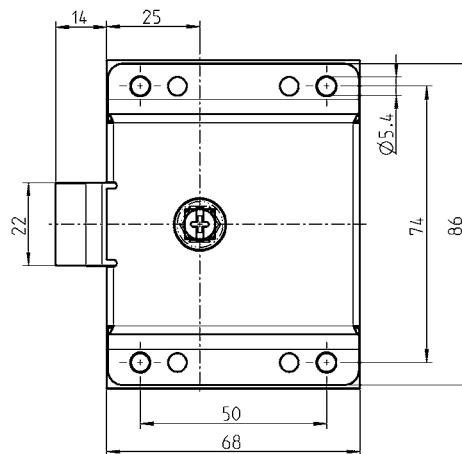


Slam lock

PROGRAM 1034



- Door edge to sq drive c/l approx. 25 mm



Slam latch m.s. zinc pl., zinc die raw and spring steel
Support and vibration proof screw m.s. zinc plated

Slam lock	1034-U1
Support	1034-03
Locking screw M6x20	1000-277-04JB

Further parts see page

– Quarter turns
(bottom)
(at the top)

B1-120
B1-150
B1-160
B1-170
B1-180