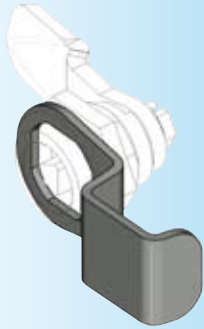




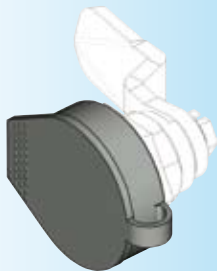
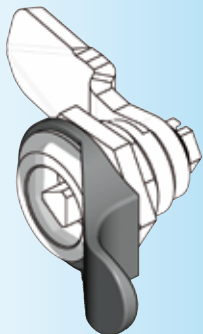
RL

IP 65



**Attention:**

The H-dimension will be reduced by 2 mm with the finger pull installed.

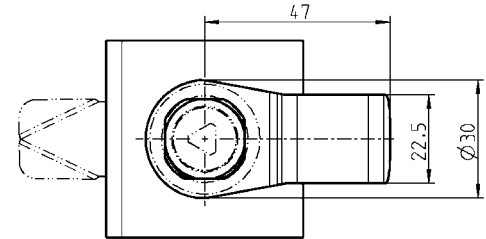
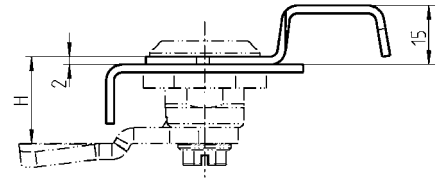
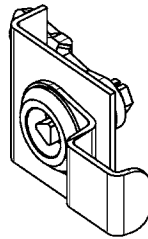


**Attention:**

The H-dimension will be reduced by 2 mm with this dust cap installed.

**Further parts see page**

- Quarter turns
- up to 1B-120
- up to 1B-222
- up to 1B-235
- up to 1B-335
- 1B-360
- 1B-420
- 1B-840
- 1B-860



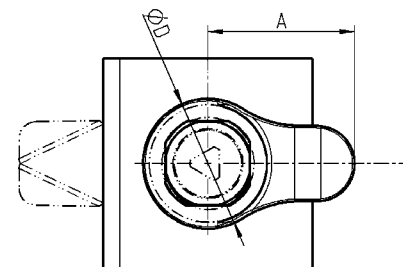
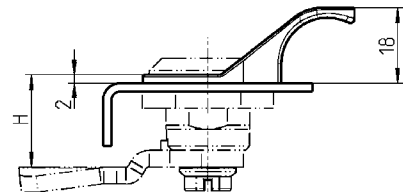
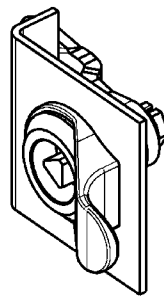
**Finger pull m.s. black powder coated**

1000-359

**IP 65 with:**

Flat seal

1000-23



**Finger pull polyamide GF black**

for housing with head diameter Ø 28

; D = 31, A = 35

1000-358

for housing with head diameter Ø 30 and 32

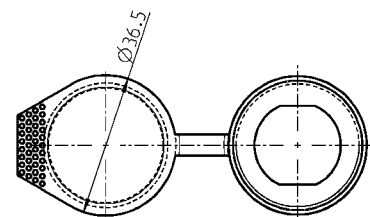
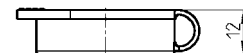
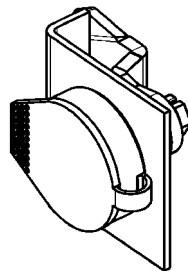
; D = 35, A = 36

1000-358-01

**IP 65 with:**

Flat seal

1000-23



**Dust cap polyethylene black**

1000-97-01