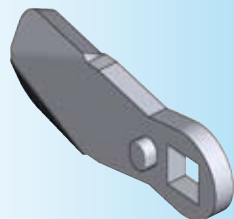


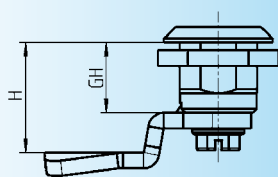
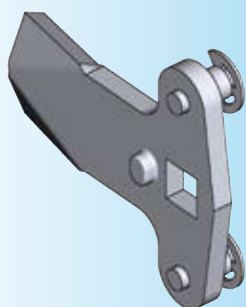
- Info
- 1 Quarter turns
- 2 Rod controls
- 3 Locking systems
- 4 Hinges
- 5 Gasketing
- 6 Handles
- 7 Aluminium windows
- 8 Stainless steel



Cam with catch



Cam without catch

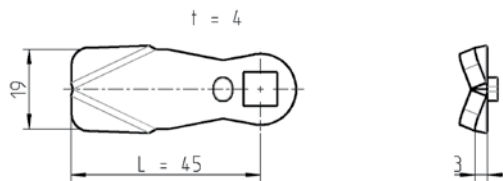


Further parts see page

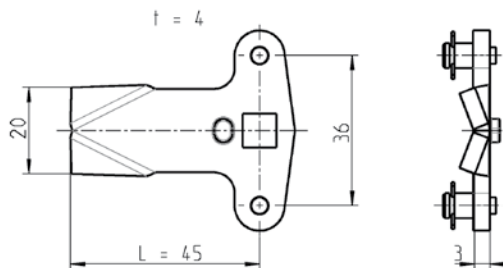
- Ramp 1C-170
- Rod 8A-360
- Quarter turns 8A-220
- to 8A-230
- 8A-240
- up to 8A-290



Version 1
Cam



Version 2
Cam with rod control (flank cam)



PO sample for a cam without catch:

To order a cam without catch, complete the selected item no. from the below table with a Z.
Example: You require a cam for a housing GH = 18 without catch with the H dimension 22 made of one of the available materials: AISI 304 or AISI 316.

Please order with the following item no.:

for cam without catch of AISI 304 = 1000-179-Z
for cam without catch of AISI 316 = 1000-179-ZPD

Attention: cam with rod control without catch **on request**

Cam with catch material as requested

H dimensions for GH =			Version 1		Version 2
			AISI 304	AISI 316	AISI 304
18	31	43	-	-	-
4	17	29	-	-	-
6	19	31	1000-221	1000-221-PD	-
8	21	33	-	-	-
10	23	35	1000-223	1000-223-PD	-
13	26	38	-	-	-
14	27	39	1000-225	1000-225-PD	-
16	29	41	-	-	-
18	31	43	1000-227	1000-227-PD	-
20	33	45	1000-228	1000-228-PD	-
22	35	47	1000-179	1000-179-PD	1000-U139
24	37	49	1000-229	1000-229-PD	-
25	38	50	-	-	-
26	39	51	1000-230	1000-230-PD	-
28	41	53	1000-180	1000-180-PD	1000-U140