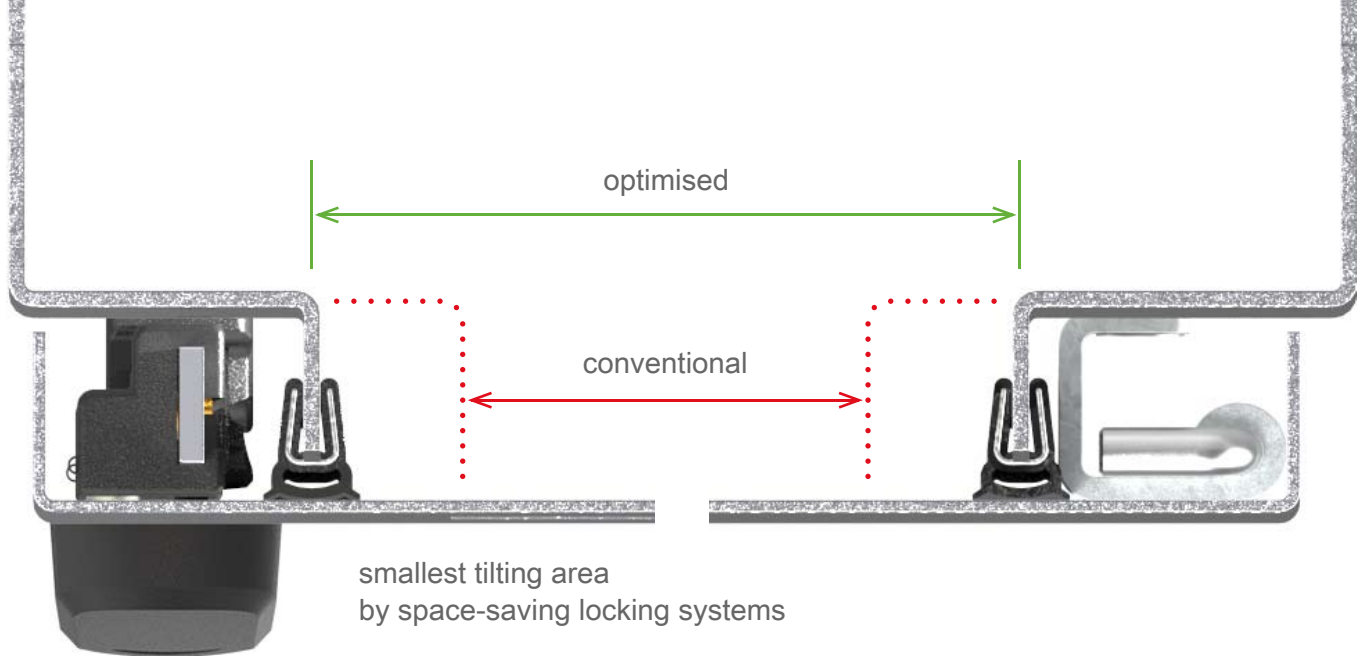
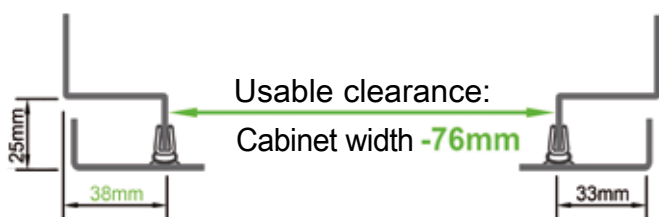




Ingenious locking technology for
more added space and easy access

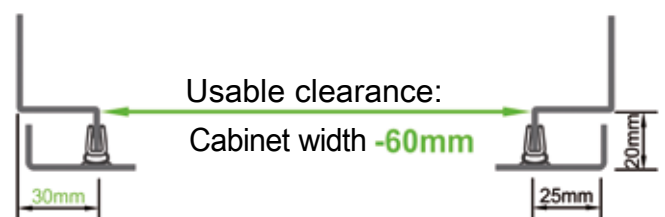


Examples of use



Lifthandle
1390-U1

125° hinge
1031-U12



Swinghandle
1325-U202

130° hinge
1031-EU41



EMKA maximises the usable clearance

New, perfectly matching locking systems allow for increased usable clearance. For the bending areas at the lock and the hinge side of a housing EMKA has developed specially space-saving lock components and hinges.

The result: usable clearance for more space and elbow room.



The suitable handle for any requirement

Having a lock on everything - design, functionality and type of locking, both mechanical and electro-mechanical, these are the distinctive features of the swing and lift handles specifically developed by EMKA.

They use small clearances specially effectively and create space where necessary.



Slim and strong: rod guides and catches

The locking components of plastic, aluminium or steel pull the door to the frame and thus ensure a firm pressure on the gasketing. The narrower the space, the more demanding the requirement for the interplay of lock and rod guide is: whether twisted or cut out,

one- or bi-directional, single or double roll, EMKA has the adequate solution for any installation Situation.



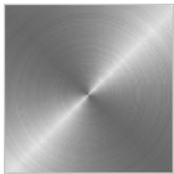
Space-saving miracle: hinges in minimal space

You have the choice! EMKA offers you numerous specially designed hinges with opening angles of 120° to 180° for any installation situation and requirement - from single to in-line cabinet.



Definitely tight: profile gasketing

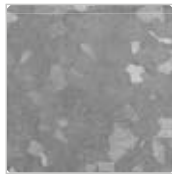
EMKA gasketing profiles of EPDM and silicone complete the modular lock product range. They protect the cabinet interior reliably from dust and moisture and provide secure purchase. All profiles from in-house production in Europe.



stainless
steel



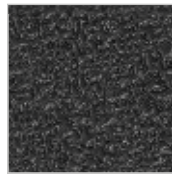
aluminium



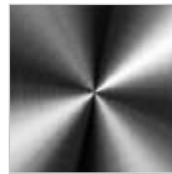
zinc



plastic



rubber



chrome
plated



zinc plated



powder
coated

Custom-made

With the modular locking system for wider door clearances by EMKA highly individual requirements can be met. In doing so you can choose from a variety of materials, surfaces and colours and add customer-specific branding.

Our locking system fits like a tailor-made suit. Please contact us by phone or e-mail for a consultation.

Subsidiaries, country representations and agencies*

 ARMENIA EMKA Kilit Sistemleri Metal Sanayi ve Ticaret Ltd. Şti. Tel. +90/262/2909097 info@emkakilit.com.tr	 CZECH REPUBLIC EMKA Kovanie/Beschlagteile Tel. +421/2/45259910 miro.emka@ba.telecom.sk	 ITALY EMKA Italia s.r.l. Unipersonale Tel. +39/045/6471070 info@emka.it	 PORTUGAL EMKA Beschlagteile Ibérica S.L. Tel. +351/910904688 info@emka-iberica.pt	 SWITZERLAND EMKA Beschlagteile AG Tel. +41/33/8260220 info@emka.ch
 AUSTRIA EMKA Beschlagteile Ges.m.b.H. Tel. +43/2143/43063 info@emka-beschlagteile.at	 DENMARK * A/S Megatrade Beslag Tel. +45/44916700 mega@megatrade.dk	 JAPAN * TOCHIGIYA Co., Ltd Tel. +81/48/2283072 support@tochigiya.co.jp	 ROMANIA S.C. EMKA Beschlagteile S.R.L. Tel. +40/269/222700 info@emka.ro	 TUNISIA EMKA Beschlagteile GmbH www.emka.com info@emka.com
 AUSTRALIA Lock Focus Pty. Ltd. Tel. +61/3/97981322 lockf@lockfocus.com.au	 ESTONIA EMKA Scandinavia Tel. +46/36/314130 info@emka.se	 KAZAKHSTAN EMKA Kilit Sistemleri Metal Sanayi ve Ticaret Ltd. Şti. Tel. +90/262/2909097 info@emkakilit.com.tr	 RUSSIA * OOO"MK-Electro Tel. +7/812/4492928 info@mk-electro.ru	 TURKMENISTAN EMKA Kilit Sistemleri Metal Sanayi ve Ticaret Ltd. Şti. Tel. +90/262/2909097 info@emkakilit.com.tr
 AZERBAIJAN EMKA Kilit Sistemleri Metal Sanayi ve Ticaret Ltd. Şti. Tel. +90/262/2909097 info@emkakilit.com.tr	 FINLAND EMKA Scandinavia Tel. +46/36/314130 info@emka.se	 LATVIA EMKA Scandinavia Tel. +46/36/314130 info@emka.se	 SERBIA EMKA Okovi d.o.o. Tel. +385/35/270073 info@emka-okovi.hr	 TURKEY EMKA Kilit Sistemleri Metal Sanayi ve Ticaret Ltd. Şti. Tel. +90/262/2909097 info@emkakilit.com.tr
 BELGIUM EMKA Benelux B.V. Service Office Tel. +31/413/323510 sales@emka.org	 FRANCE EMKA France Tel. +33/254/320862 emka@emka-france.com	 LITHUANIA EMKA Scandinavia Tel. +46/36/314130 info@emka.se	 SINGAPORE * VF Fastening Systems PTE Ltd. Tel. +65/675/2333 vincent@vffastening.com.sg	 THAILAND * Best Port Company Ltd. Tel. +66/2/9935739 bestport@samartas.com
 BOSNIA-HERZEGOVINA EMKA Bosnia d.o.o. Goražde Tel. +38/738/241310 info@emka.ba	 GEORGIA EMKA Kilit Sistemleri Metal Sanayi ve Ticaret Ltd. Şti. Tel. +90/262/2909097 info@emkakilit.com.tr	 MEXICO EMKA Mexico Beschlagteile Tel. +52/44/22095217 info@emka.mx	 SLOVAKIA EMKA Kovanie Tel. +421/2/45259910 miro.emka@ba.telecom.sk	 UNITED KINGDOM EMKA (UK) Ltd. Tel. +44/2476/616505 enquiry@emka.co.uk
 CANADA EMKA Inc. Tel. +1/717/9861111 info@emkausa.com	 GREECE * EMKA Hellas Tel. +30/21041/83000 info@emka-hellas.com	 MONTENEGRO EMKA Bosnia d.o.o. Goražde Tel. +38/738/241310 info@emka.ba	 SOUTH AFRICA * Enclosure Solutions Tel. +27/11/9737260 info@enclosuresolutions.co.za	 UAE EMKA Middle East Tel. +971/42844528 info@emka.ae
 CHILE * NDU Ingenieria Ltda. Tel. +56/22/5266646 info@ndu.cl	 HUNGARY EMKA Beschlagteile Tel. +36/1/2360032 info@emka.hu	 NETHERLANDS EMKA Benelux B.V. Tel. +31/413/323510 info@emka.org	 SOUTH KOREA * Geo Jeon Co. Ltd. Tel. +82/314/335508 geojeone@emkakoreanaver.com	 USA EMKA Inc. Tel. +1/717/9861111 info@emkausa.com
 CHINA EMKA Industrial Hardware CO.Ltd. Tel. +86/22/82123759 info@emka.cn	 INDIA EMKA India Tel. +91/80/26660212 info@emka.in	 NORWAY EMKA Scandinavia Tel. +46/36/314130 info@emka.se	 SPAIN EMKA Beschlagteile Ibérica S.L. Tel. +34/672262672 info@emka-iberica.es	 UZBEKISTAN EMKA Kilit Sistemleri Metal Sanayi ve Ticaret Ltd. Şti. Tel. +90/262/2909097 info@emkakilit.com.tr
 CROATIA EMKA Okovi d.o.o. Tel. +385/35/270073 info@emka-okovi.hr	 ISRAEL * Teder Electro Mechanical Engineering Ltd. Tel. +972/73/2331200 sales@teder.com	 POLAND EMKA -Polska Sp.Z o.o. Tel. +48/323606026 info@emka.net	 SWEDEN EMKA Scandinavia Tel. +46/36/314130 info@emka.se	 VIETNAM * Terramar Engineering and Machinery (Pte.) Ltd. Tel. +84/8/39153209 cam@terramar.com

www.EMKA.com