

**Kommunikationsmodul – Bauform Kit**

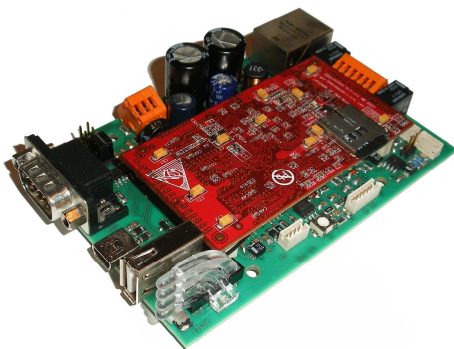
Das Kommunikationsmodul 3000-U140-02 ist Bestandteil des ELM Systems. Es beinhaltet die zentrale System-Steereinheit einschließlich Ereignisspeicher mit Schnittstellen zur Konfiguration und Kommunikation und 2 Alarmrelais. Zusätzlich ist ein analoger Sensor aus dem ELM Programm anschließbar. Pro ELM System kann nur ein Kommunikationsmodul eingesetzt werden.

Technische Änderungen vorbehalten.

**Communications module – Kit style**

The communications module 3000-U140-02 module is part of the ELM system. It contains the central control unit for the system with event memory, interfaces for system configuration and communication and 2 alarm relays. In addition an analog ELM sensor can be connected. Only one communications module can be used in an ELM system.

Subject to technical changes.



Power supply:	12 V DC, 350 mA
Relay data:	max. 48 V AC, max. 0.5 A, max. 30 V DC, max. 1.0 A
Data interfaces:	RS 232 Sub-D9, USB (front) Ethernet RJ45 (rear)
LED CAN:	flashing when active, otherwise ON
LED CYC:	flashing when polling cycle is complete
LED NWR/NWT:	flashing when receiving / transmitting data via network, otherwise OFF
Box dimensions:	135 x 32 x 229 mm (W x H x D)

Fig. 1: 3000-U140-00 (without DIN rail holder)

**CAN bus wiring**

JST-S4-ZR edge connector, cable connection via socket terminal strip JST ZHR-4. If the module is the first or the last in the chain then CAN Bus termination jumper must be set. This is essential for correct operation!

RS 232	9 pin SubD connector; TTL level on male connector J4; baud rate 38400 bits/s; for special purposes only
USB	Configuration and firmware update
Network	RJ 45 jack; 100 MBit Ethernet; Protocol IP

Clear RAM      Open J5 for about 5 sec

**Note**

Power supply is fed from another module through CAN Bus connectors CAN1 or CAN2

**Sensor input**

Sensor input	0...7500 mV, 13.3 kΩ;
Overvoltage protection	-25...+30 V
Sensor supply	12 V DC

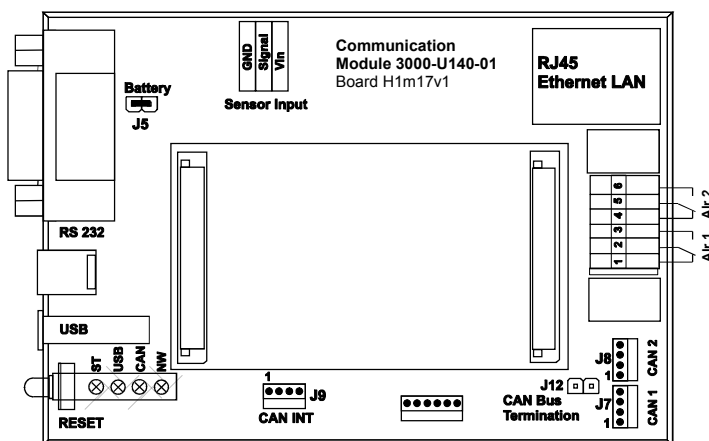


Fig. 2: Schematic diagram