



## Elektromechanischer Schwenkgriff für Outdoor-Anwendungen RC2 (48 V oder 12 V Ausführung)

Der Schwenkgriff 1317-U151/U161-xx dient als elektromechanischer Verschluss für Gehäuse im Außenbereich. Er erfüllt die Anforderungen zum Schutz vor Vandalismus gem. Widerstandsklasse RC2. Die „Push-to-Pull“ Funktion verhindert, dass ein versehentlich freigeschalteter Griff aufspringt, da der Hebel zum Öffnen zuerst in die Mulde gedrückt werden muss. Zur Notöffnung kann ein Profilhalbzylinder mit 40 oder 45 mm Länge eingesetzt werden.

Technische Änderungen vorbehalten.



## Electromechanical Swing Handle for Outdoor Applications RC2 (48 V or 12 V Version)

The swing handle 1317-U151/U161-xx serves as an electromechanical lock for outdoor enclosures. It meets the requirements for protection against vandalism in accordance with Resistance Class RC2. The "Push-to-Pull" feature prevents an accidentally released handle from jumping open, as the lever must first be pushed into the escutcheon to open it. A profile half cylinder with a length of 40 or 45 mm can be used for emergency opening.

Subject to technical changes.



Fig. 1  
1317-U151/U161-xx  
Swing handle

### Electrical data

Power supply:	48 VDC / 12 VDC
Power consumption:	9.6 W, 250 mA (48 V version) / 9.0 W, 750 mA (12 V version)
Stand-by current:	0 mA
Power-on time:	40 % (max. 1 minute); allow 2 minutes break, before switching on again
Output (status contact):	reed contact, max. 200 V, max 0.4 A to indicate handle OPEN / CLOSED
Connecting cable:	4 x 0.25mm <sup>2</sup> connecting cable, 4 m long with 6-pole JST plug PHR-6-BK

### General & safety data

IP protection:	front IP 65 (cylinder cover closed) acc. to DIN 40 050, part 9, DIN EN 60 529
Operating temperature:	-30°C ... +80°C
Mounting position:	85° ... 95° in reference to a horizontal axis
Intrusion protection:	resistance class 2 (RC2) acc. to DIN V ENV 1630; 1999-04

### Mechanical capabilities

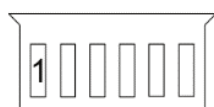
Shock:	50 g, 11 ms
Vibration:	5 ... 9 Hz, ±7.5 mm, 9 ... 150 Hz, 2 g
Opening cycles:	50,000

### Materials, weight

Handle / escutcheon:	zinc-diecast, powder coated, with circumferential labyrinth against unauthorized opening
Cover:	plastics
Shaft:	brass
Weight:	1.4 kg (short version); 1.5 kg (long version)

## Electrical connection

6-pin JST connector

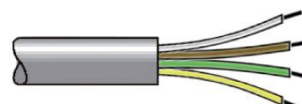


Pin assignment

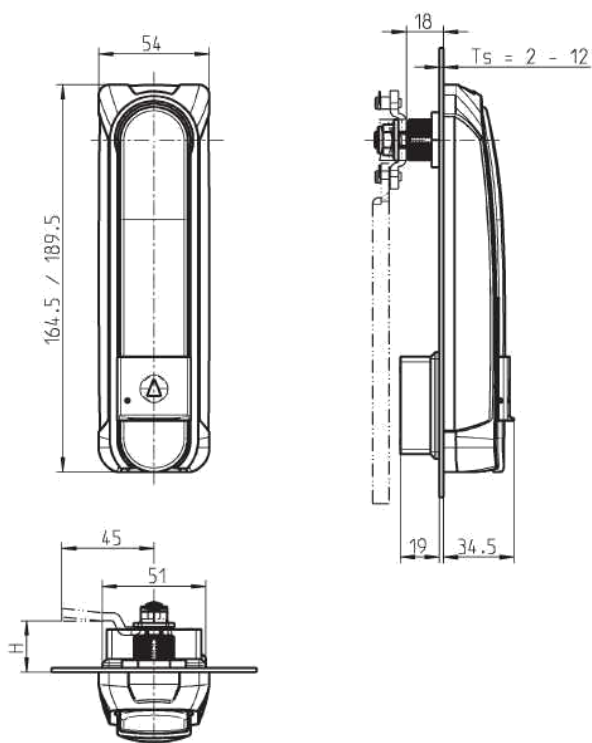
Pin 1	GN	status contact
Pin 2	YE	status contact
Pin 3	n.c.	
Pin 4	n.c.	
Pin 5	BN	0 VDC
Pin 6	WH	+ VCC

Open wire strands

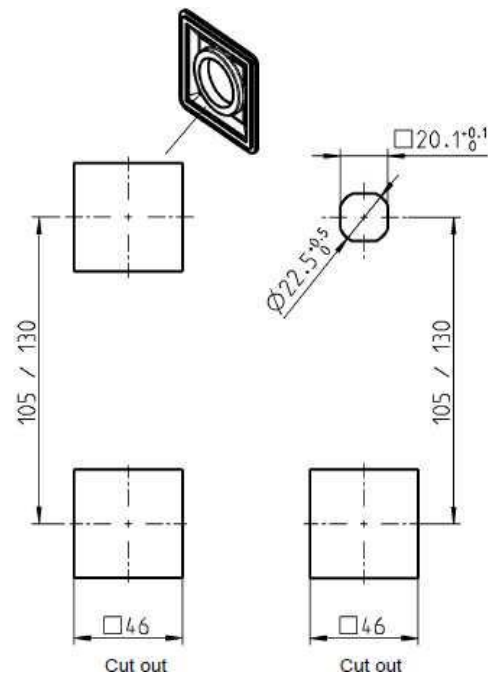
WH	+	VCC
BN	0	V
GN		status contact
YE		status contact



Dimensions / Cutout



164.5 = 1317-U151-xx  
189.5 = 1317-U161-xx

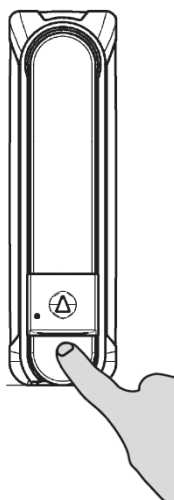


105 = 1317-U151-xx  
130 = 1317-U161-xx

Fig. 3 Dimensions

Fig. 4 Cut out

Open handle procedure



After electrical release, push lever into the escutcheon to allow disengagement of the locking mechanism. Then pull out the lever to open the lock.

Fig. 5 Open handle procedure

Part numbers covered by this data sheet

48 V versions

- |                |                |
|----------------|----------------|
| 1317-U151-00   | 1317-U161-00   |
| 1317-U151-BO   | 1317-U161-02   |
| 1317-U151-HJ   | 1317-U161-HJ   |
| 1317-U151-02   | 1317-U161-02HJ |
| 1317-U151-02HJ |                |
| 1317-SU06-BO   |                |
| 1317-SU06-HJ   |                |

12 V versions

- 1317-U151-12BO
- 1317-U151-12HJ
- 1317-SU16
- 1317-SU30

Please check for detailed manuals:



[https://www.emka.com/de\\_de/services/download/electronics/datenblaetter/](https://www.emka.com/de_de/services/download/electronics/datenblaetter/)

[https://www.emka.com/de\\_en/services/download/electronics/data-sheets/](https://www.emka.com/de_en/services/download/electronics/data-sheets/)