



**Locking technology  
mounted quickly**

# Locking systems for switch and control cabinets

---

The modular range of EMKA products offers a unique choice of different types of locking systems for switch and control cabinets.

The high quality and product standards are guaranteed by an excellent manufacturing know-how and by the certified process control according to ISO 9001.

The company's own accredited test laboratory guarantees consistent quality assurance at the highest level.



Swinghandle



Rod control  
with cam



Connector



Rod guide



Guiding shoe



Accessories



Seal



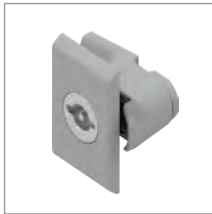
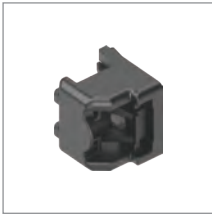
Hinge

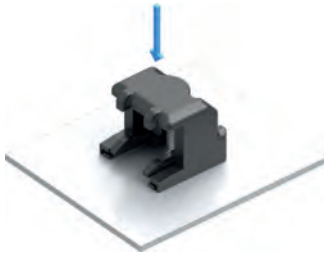
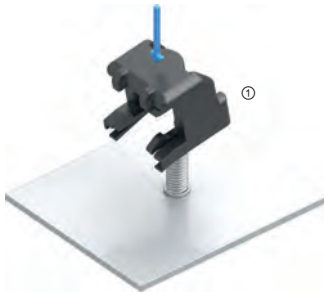
# Quick mounting

---

EMKA offers special product solutions for quick mounting. These facilitate simple, toolless handling that does not only save time but is also done very easily.

This saves time and money.





① Flat rod guide

1121-135

### Flat rod guide, clip-in

- Also suitable for powder-coated weld studs
- Sturdy design, high pull-off forces
- Rod guide spring-loaded
- Clip-in flat rod
- Mounted quickly without tools
- Patented

①

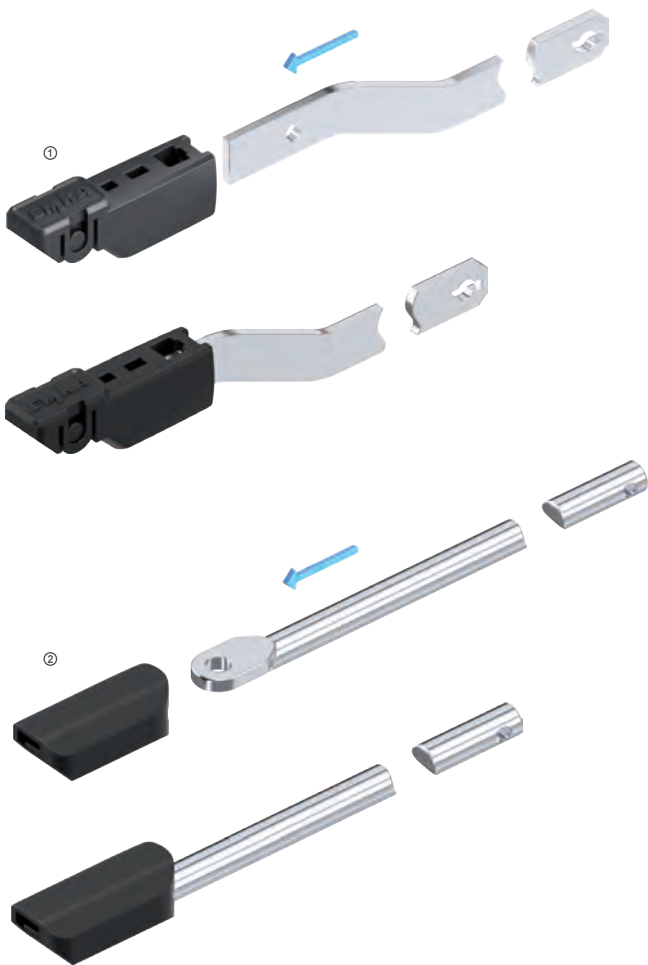


① Round rod guide

1001-U47

### Round rod guide, clip-in

- Also suitable for powder-coated weld studs
- 1 product for 2 heights (20 mm / 26 mm)
- 100% corrosion-resistant
- Mounted quickly without tools
- Patented



- ① For flat rod
- ② For round rod

1121-U186  
1000-526-AA

### Shoe for flat and round rod

- Increased range
- Soft lock
- Flat and round rod rattle-free
- Innovative design
- Mounted quickly without tools
- Patented

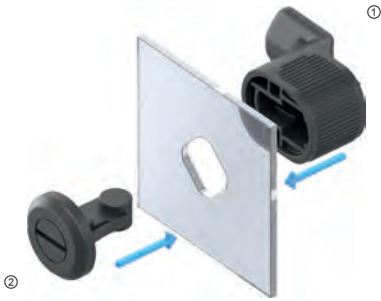


① Hinge

1056-U68

### Hinge without pin, clip-in

- Identical hinge parts
- Without usual hinge pin
- For right-hand and left-hand doors
- Entirely made of polyamide
- 100% corrosion-resistant
- Opening angle 220°
- Patented



① Snap-in cam

1022-54-02 (1.5 - 2.0 mm metal gauge incl. surface coating)

1022-55-02 (1.0 - 1.5 mm metal gauge incl. surface coating)

1022-56-02 (0.5 - 1.0 mm metal gauge incl. surface coating)

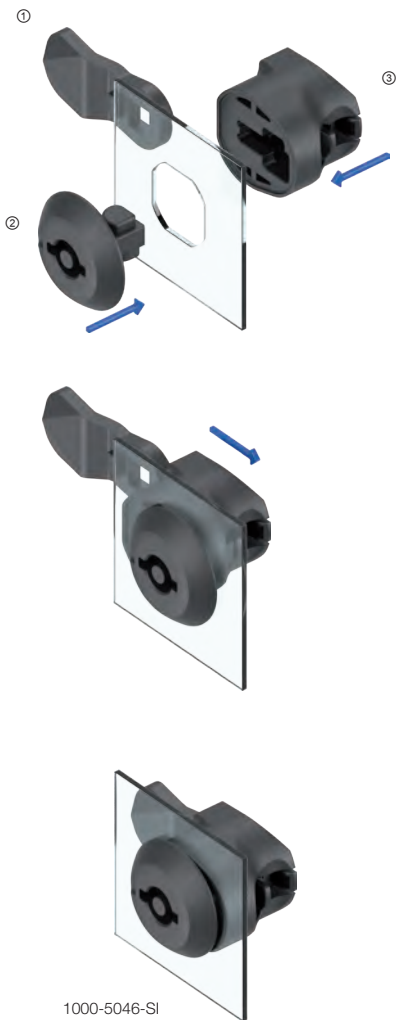
② Insert

1022-U91

### Quarter turn 1022 for quick mounting

- Increased compression
- High IP rating (IP 69K)
- 100% corrosion-resistant
- Cut out □ 14.1 rounded up to 16.3
- Mounted quickly without tools
- Available for metal gauges from 0.5 to 2 mm
- Patented





- ① Cam
- ② Insert
- ③ Snap-in housing

1000-5046-SI  
 1000-U873  
 1000-551-00 (1.5 - 2.0 mm metal gauge incl. surface coating)  
 1000-551-01 (1.0 - 1.5 mm metal gauge incl. surface coating)  
 1000-551-02 (0.5 - 1.0 mm metal gauge incl. surface coating)

### Quarter turn 1000 for quick mounting

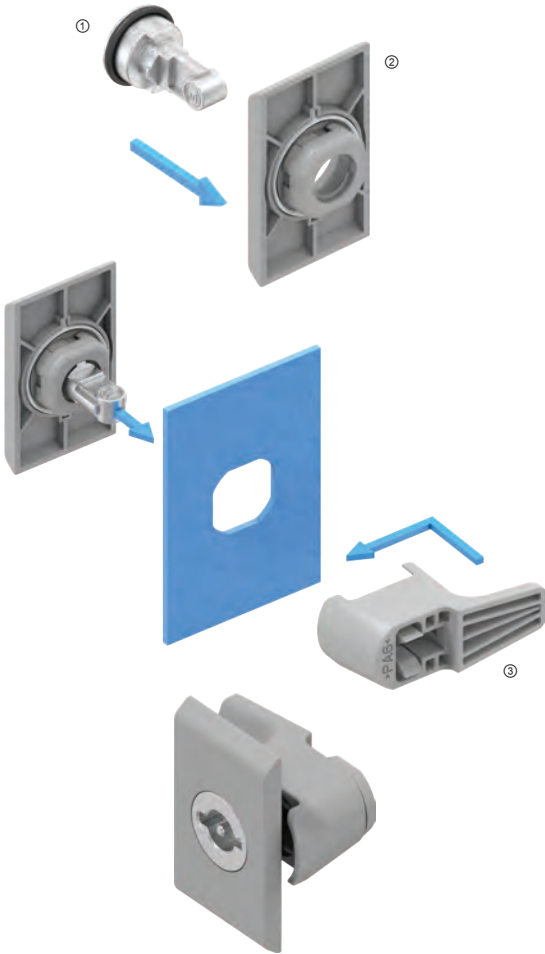
- Optionally with polyamide or steel cam
- High IP rating (IP 69K)
- For right-hand and left-hand doors
- Cut out □ 20.1 rounded up to 22.5
- Mounted quickly without tools
- 3 types for different metal gauges
- Patented



① Insert	1500-B140-H18
② Locking clip	1500-02-10 (1.0 - 1.5 mm metal gauge incl. surface coating)
	1500-02-15 (1.5 - 2.0 mm metal gauge incl. surface coating)
③ Housing	1500-01-G

### Quarter turn 1500 for quick mounting

- Low-priced locking solution
- High IP rating (IP 65)
- 100% corrosion-resistant
- Cut out □ 22.1 rounded up to 24.5
- Mounted quickly without tools
- Patented



② Insert by choice

1000-U973 to 1000-U978

② Housing pre-assembled

1000-U972

③ Snap-in cam - Height and door thickness variable

1000-590-CX to 1000-601-CX

### Quarter turn 1000 for quick mounting

- 3 parts mounted in 3 seconds without tools
- Polyamide in metallic optics
- Pre-assembled housing plate with structured surface
- High IP rating (IP 69K)
- Available for metal gauges from 1 to 3 mm
- Cut out  $\square$  20.1 rounded up to 22.5
- Patented

**WirtschaftsWoche**

---

 **WELT  
MARKT  
FÜHRER**

**Champion**

---

**2021**

---

**EMKA Beschlagteile**  
Verschlüsse, Scharniere  
und Dichtungen

---

 Akademie Deutscher Weltmarktführer

 Henri B. Meier  
Unternehmerschule  
 Universität St.Gallen

[www.EMKA.com](http://www.EMKA.com)

EMKA Beschlagteile GmbH & Co. KG  
Phone: +49/2051/273-0  
42551 Velbert, Germany  
info@emka.com