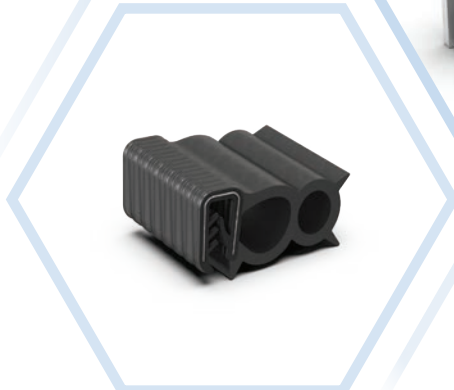
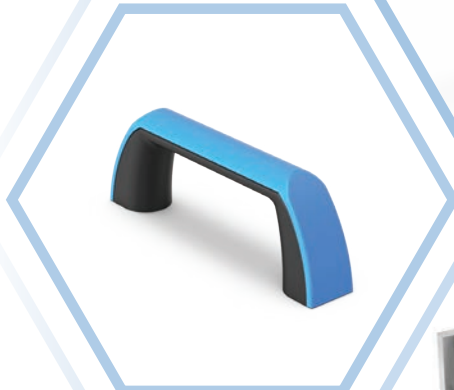


NEW PRODUCTS 2021



SALES
WORLDWIDE

92 %
FROM IN-HOUSE
PRODUCTION

IN-HOUSE
MOULD MAKING

**Ingenious Locking Technology
for HVACR systems according to VDI 6022**



About EMKA

The EMKA GROUP is world market leader for locks, latches, hinges and seals used in switch and control cabinets.

For more than 40 years, the company has been active across all sectors in the fields of industry (switch and control cabinets, HVACR systems, mechanical engineering) and transport (railway and commercial vehicles, caravans, etc.) with conventional and electronic locking solutions.

The overall range comprises more than 30,000 catalogue and special articles, which are developed, manufactured, refined and assembled at eleven production sites in Germany, France, Great Britain, Spain, Bosnia-Herzegovina, Serbia, China, India and Indonesia.

In one of the two new plants in Bosnia, the company produces around 900 moulds for injection moulding and die casting every year - both for own production and for external customers.

With 2,100 employees, EMKA serves over 36,000 customers in 55 countries worldwide. In 2020, the company achieved turnover of over 295 million euros.

EMKA - Ingenious Locking Technology.

Worldwide first choice

2,100 employees

Own production at 11 international locations

Represented in 55 countries worldwide

More than 30,000 catalogue and special products

More than 36,000 customers worldwide



Company headquarters Velbert, Germany



Henriville, France



Birmingham, UK



Wuppertal, Germany



Arnedo, Spain



Tianjin, China



Goražde (Plant 1), Bosnia-Herzegovina



Mionica, Serbia



Bhilai, India



Goražde (Plant 2), Bosnia-Herzegovina



Bandung, Indonesia

- Company headquarters
- Production site
- Subsidiary
- Agency



Solutions for HVACR systems

EMKA not only produces a variety of locks, latches and hinges, but also offers seals as well as edge protection profiles and thus complete RLT closure solutions from a single source. They are characterised by modular design, versatility and the highest quality. EMKA locking solutions meet the special requirements of the industry and are aligned with relevant standards such as DIN EN 1886 or VDI 6022.

In addition, EMKA provides individual special solutions which are developed in dialogue with the customer.

Whether locks, latches, handles, hinges or seals for diverse applications: EMKA products always stand for maximum safety and reliability.

As a long-time system partner of the HVACR industry, EMKA is constantly working on new and innovative products. In addition to newly developed and enhanced locking solutions, EMKA complements its product portfolio with innovative locking systems, special hinges, seals and special solutions, thus responds to the current requirements of the market.

EMKA already has the trends that will become the standard tomorrow!

Modular locking system

- New modular handle with an innovative design
- Suitable for doors opening inwards and outwards
- Suitable for various door thicknesses (25 - 100 mm)
- Fits 3 standard cut outs (13 mm, 19 mm, 24 mm)
- Interchangeable locking sets for external or internal locking (blind plug, round cylinder, square, other inserts on request)
- Adjustable roller cam
- Adjustable eccentric roller
- Removable handle during transport
- Meets the industry-specific national and international standards
- Conforms with the entire EMKA program
- Material: Polyamide with glass fibre (VDI 6022 / ISO 846 compliant materials)
- Air Tightness class L1-L3 possible
- Protected design



Prominent door lock with inside handle

- New modular locking system especially for use on large doors (>1.6 m door height)
- Various inserts and handle options in combination with different cams possible (stepped cam, pressure relief cam, etc.)
- System for various door thicknesses available (30 mm - 60 mm)
- Also available as version without inside handle
- VDI 6022 / ISO 846 compliant materials on the inside of the door

Latch-Hinge with emergency opening

- Especially suitable for use on large doors (>1.6 m door height)
- When the door is closed, the latch is adjustable (3 mm) to achieve perfect alignment
- The favourable pivot point of the handle makes a seal compression of 5 mm possible using low actuation forces
- Door or panel can be removed by unlatching the handles on both sides
- 3D adjustable (tolerance compensation)
- Latch hinge can be mounted as one piece with the door / flap in place
- Right or left hinged
- Hinge 180° opening angle
- Optional latch-hinge with safety function "pressure relief" can be ordered
- Patent submitted
- VDI 6022 / ISO 846 compliant materials on the inside of the door
- ATEX compliant explosion protection version available on request



Latch-Hinge large

- For door surfaces > 0.8 m²
- The favourable pivot point of the handle allows for low actuation forces a seal compression of 5 mm
- When the door is closed, the latch is adjustable (3 mm) to achieve perfect alignment
- Door or panel can be removed by unlatching the handles on both sides
- Hinge 180° opening angle
- 3D adjustable (tolerance compensation)
- Available with or without pressure relief
- ATEX compliant explosion protection version available on request
- Patent submitted



Latch-Hinge small

- For door surfaces < 0.8 m²
- 40 % reduced size → significant price advantage
- The favourable pivot point of the handle allows for low actuation forces a seal compression of 5 mm
- Door or panel can be removed by unlatching the handles on both sides
- Hinge 180° opening angle
- 2D adjustable (tolerance compensation)
- Available with or without pressure relief
- ATEX compliant explosion protection version available on request
- Patent submitted



Bow-type handle

- Ergonomic bow-type handle made of reinforced polyamide
- Mounting of the bow-type handle by choice. The use of cylinder head screw, hexagon head screw, countersunk screw or nuts can be accommodated, depending on the version
- Handle and cover are available in color and / or antibacterial version
- Bow-type handle also usable without cover
- Protected design



3D Unit connector

- 3D positioning through spherical shaping with max. X-axis 7 mm Y-axis 3 mm Z-axis 5 mm
- Fixing by M6 cylinder screws or riveted bolts possible
- Cylinder screw included
- Industry standard mounting dimensions
- Covering cap optionally available
- VDI 6022 / ISO 846 compliant materials



Clip-on profile according to hygiene standard VDI 6022

- Higher functionality when sealed with sponge rubber in the hose area
- Seal does not form a breeding ground for microorganisms
- Easy to clean
- Moisture resistant
- Odourless

 ALGERIA EMKA France Tel. +33/254/320862 emka@emka-france.com	 ESTONIA EMKA Polska Tel. +370/612/42868 m.balsevicius@emka.net	 MOROCCO EMKA France Tel. +33/254/320862 emka@emka-france.com	 SPAIN EMKA Beschlagteile Ibérica Tel. +34/672/262672 info@emka-iberica.es
 ARMENIA EMKA Kilit Tel. +90/262/2909097 info@emkakilit.com.tr	 FINLAND EMKA Scandinavia Tel. +46/36/314130 info@emka.se	 MEXICO EMKA Mexico Beschlagteile Tel. +52/44/22095217 info@emka.mx	 SWEDEN EMKA Scandinavia Tel. +46/36/314130 info@emka.se
 AUSTRIA EMKA Beschlagteile Ges.m.b.H. Tel. +43/2143/43063 info@emka-beschlagteile.at	 FRANCE EMKA France Tel. +33/254/320862 emka@emka-france.com	 MONTENEGRO EMKA Bosnia Tel. +387/38/241310 info@emka.ba	 SWITZERLAND EMKA Beschlagteile AG Tel. +41/33/8260220 info@emka.ch
 AUSTRALIA * Lock Focus Tel. +61/3/97981322 sales@lockfocus.com.au	 GEORGIA EMKA Kilit Tel. +90/262/2909097 info@emkakilit.com.tr	 NETHERLANDS EMKA Benelux Tel. +31/413/323510 info@emka.org	 TUNISIA EMKA France Tel. +33/254/320862 emka@emka-france.com
 AZERBAIJAN EMKA Kilit Tel. +90/262/2909097 info@emkakilit.com.tr	 GREECE * EMKA Hellas Tel. +30/21041/83183 info@emka-hellas.com	 NORWAY EMKA Scandinavia Tel. +46/36/314130 info@emka.se	 TURKMENISTAN EMKA Kilit Tel. +90/262/2909097 info@emkakilit.com.tr
 BELARUS EMKA Polska Tel. +48/32/6663300 info@emka.net	 HUNGARY EMKA Beschlagteile Ges.m.b.H. Tel. +36/1/2360032 info@emka.hu	 POLAND EMKA Polska Tel. +48/32/6663300 info@emka.net	 TURKEY EMKA Kilit Tel. +90/262/2909097 info@emkakilit.com.tr
 BELGIUM EMKA Benelux Tel. +31/413/323510 info@emka.org	 INDIA EMKA India Tel. +91/80/48542727 info@emka.in	 PORTUGAL EMKA Beschlagteile Ibérica Tel. +34/672/262672 info@emka-iberica.pt	 UAE EMKA Middle East Tel. +971/4/2844528 info@emka.ae
 BOSNIA-HERZEGOVINA EMKA Bosnia Tel. +387/38/241310 info@emka.ba	 INDONESIA EMKA Pacific Tel. +62/22/87301000 info@emka-pacific.id	 ROMANIA S.C. EMKA Beschlagteile Tel. +40/269/222700 info@emka.ro	 UKRAINE EMKA Ukraine Tel. +380/96/7535875 info@emka.in.ua
 CANADA EMKA Inc. Tel. +1/717/9861111 info@emkausa.com	 ISRAEL * Kornass Mechanical Engineering Tel. +972/76/5400789 sales@kornass.com	 RUSSIA * OOO "EmTechProm" Tel. +7/812/6424397 info@emtechprom.ru	 UNITED KINGDOM EMKA (UK) Tel. +44/2476/616505 info@emka.co.uk
 CHILE * NDU Ingeniería Tel. +56/2/29639861 info@ndu.cl	 ITALY EMKA Italia Tel. +39/045/6471070 info@emka.it	 SERBIA EMKA Okovi Tel. +385/35/270073 info@emka-okovi.hr	 USA EMKA Inc. Tel. +1/717/9861111 info@emkausa.com
 CHINA EMKA Industrial Hardware Tel. +86/22/22242300 info@emka.cn	 JAPAN * TOCHIGIYA Tel. +81/48/2283072 support@tochigiya.co.jp	 SINGAPORE * VF Fastening Systems Tel. +65/6752/3033 vincent@vffastening.com.sg	 UZBEKISTAN EMKA Kilit Tel. +90/262/2909097 info@emkakilit.com.tr
 CROATIA EMKA Okovi Tel. +385/35/270073 info@emka-okovi.hr	 KAZAKHSTAN EMKA Kilit Tel. +90/262/2909097 info@emkakilit.com.tr	 SLOVAKIA EMKA Beschlagteile Ges.m.b.H. Tel. +42/190/3446826 miro.herman@gmail.com	 VIETNAM * Terramar Tel. +84/28/39153209104 duc.tinh@terramar.com
 CZECH REPUBLIC EMKA Beschlagteile CZ Tel. +43/214343063 info@emka-solutions.cz	 LATVIA EMKA Polska Tel. +370/612/42868 m.balsevicius@emka.net	 SOUTH AFRICA * Enclosure Solutions Tel. +27/11/9737260 info@enclosuresolutions.co.za	
 DENMARK * A/S Megatrade Beslag Tel. +45/44916700 mega@megatrade.dk	 LITHUANIA EMKA Polska Tel. +370/612/42868 m.balsevicius@emka.net	 SOUTH KOREA * Geo Jeon Tel. +82/314/335508 geojeon@emkakorea.co.kr	

*Agency

www.EMKA.com



EMKA Beschlagteile GmbH & Co. KG

Langenberger Str. 32 • 42551 Velbert, Germany • Tel.: +49/2051/273-0 • Fax: +49/2051/273-128 • E-Mail: info@emka.com • www.emka.com

