

# Swing handle, lift handle, and escutcheon, part 3

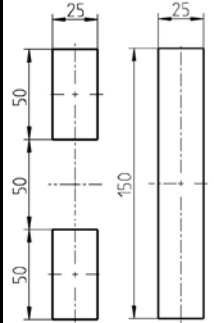
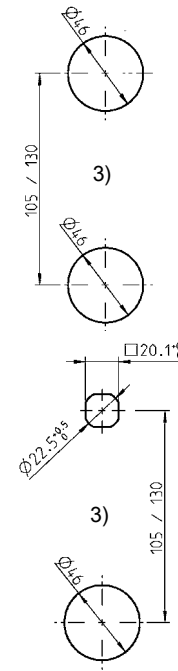
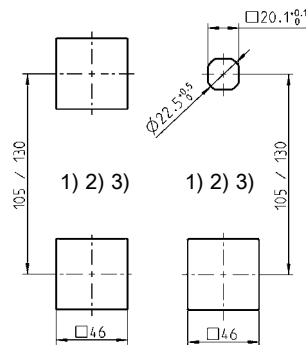
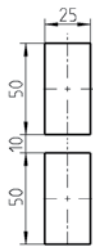
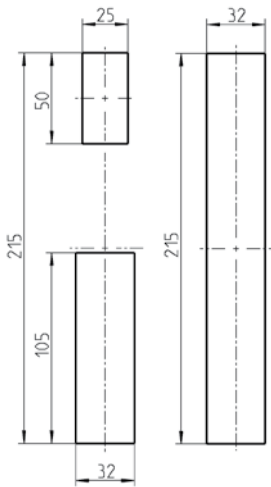
1225	1225	1317	1317	1317	1325
Double cylinder swing handle	Swing handle	Swing handle	Swing handle	Swing handle	Swing handle
3G-100	3G-100	3AB-100	3AB-100	3AB-100	3BA-100



1)

2)

3)

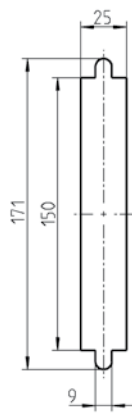
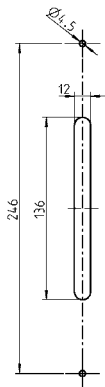
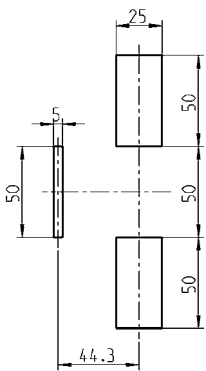


•	•	•	•	•	•
IP 65	IP 65	IP 65	IP 65	IP 65	IP 40/IP 65
•	•	•	•	•	•
•	•	•	•	•	•
•	•	•	•	•	•
•	•	•	•	•	•
•	•	•	•	•	•
•	•	•	•	•	•
•	•	•	•	•	•
•	•	•	•	•	•

1325	1390	2100	2400
Swing handle	Lifhandle	Swing handle	Swing handle
3BA-100	3FA-100	3H-100	3K-100

## Beschlagteile

see page



Please see next page for second part. Survey of further products.



Please see previous page for first part. Overview of further products.

•		•		inside the gasketing
•	•	•	•	outside the gasketing
IP 65		IP 54	IP 40	IP rating
•	•	•	•	Unlocked with insert
•	•	•	•	Unlocked with round cylinder
•	•	•	•	Unlocked with profile half cylinder
		•	•	Unlocked electronically
•		•	•	Unlocked without key
•	•	•	•	Modular technology
•	•		•	Handle and dish polyamide
		•		Handle zinc die and dish polyamide
				Handle and dish zinc die
				Handle and dish stainless steel
		•		fitting escutcheons