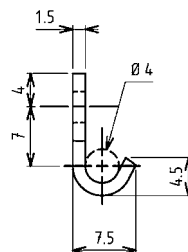
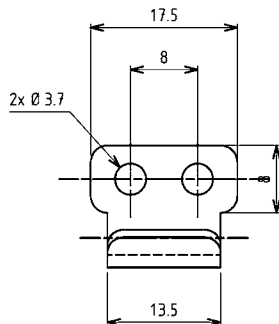




其它附件见页码  
- 搭扣

9A-260



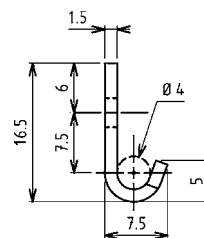
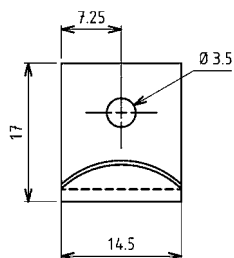
#### 钩板

DS钢, 镀锌+封闭层, 有孔	6010-07-JQ
304不锈钢, 有孔	6010-07-PC



其它附件见页码  
- 搭扣

9A-120  
9A-140



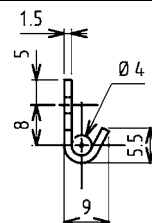
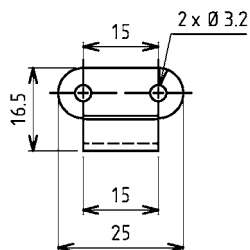
#### 钩板

裸面钢, 有孔	6010-11-KA
裸面钢, 无孔	6010-11-01KA
DS钢, 镀锌+封闭层, 有孔	6010-11-JQ
304不锈钢, 有孔	6010-11-PC
304不锈钢, 无孔	6010-11-01PC



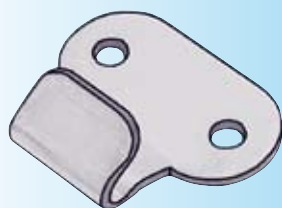
其它附件见页码  
- 搭扣

9A-220  
9A-240  
9A-310



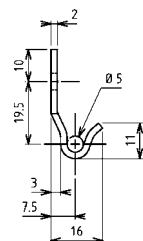
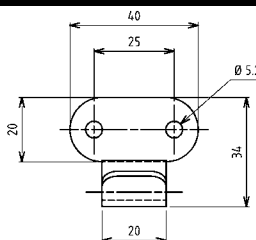
#### 钩板

裸面钢, 有孔	6010-05-KA
DS钢, 镀锌+封闭层, 有孔	6010-05-JQ
304不锈钢, 有孔	6010-05-PC



其它附件见页码  
- 搭扣

9A-220  
9A-240



#### 钩板

裸面钢, 有孔	6010-06-KA
DS钢, 镀锌+封闭层, 有孔	6010-06-JQ
304不锈钢, 有孔	6010-06-PC