



# EMKA PROflex

## Aluminium window system

### Produktionsstandorte / Production facilities

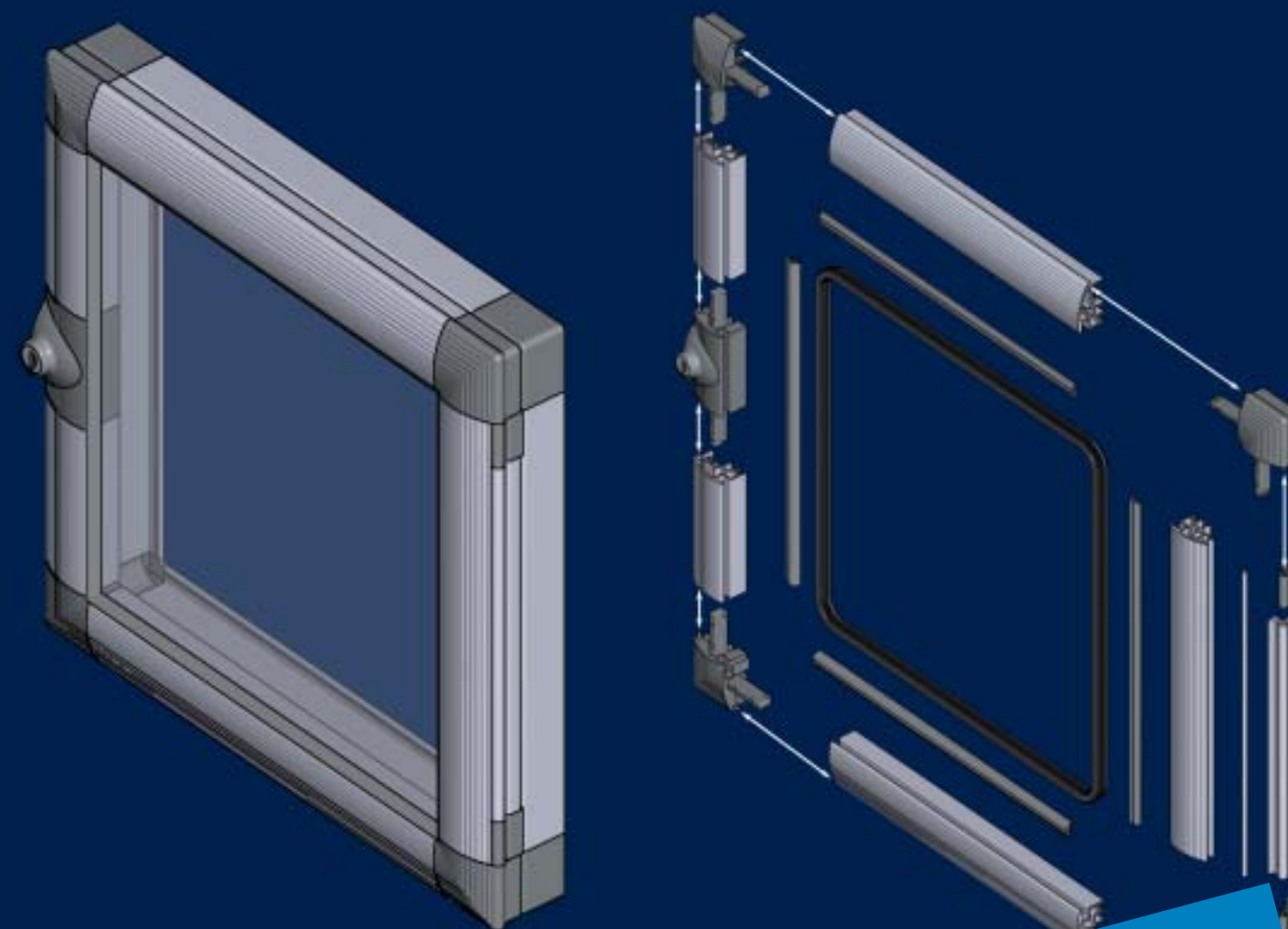
Velbert, Germany      Wuppertal, Germany      Bourré, France      Henriville, France      Goražde, Bosnia-Herzegovina

### Niederlassungen / Subsidiaries

<p><b>AUSTRIA</b> EMKA Beschlagteile Ges.m.b.H. Tel. 0043/2236/52077 info@EMKA-beschlagteile.at</p> <p><b>BELGIUM</b> EMKA Benelux B.V. Service Office Tel. 0032/156/18018 sales@EMKA.org</p> <p><b>BOSNIA-HERZEGOVINA</b> Bekto International d.o.o. Tel. 0038/738/241310 bekto@bekto.com</p> <p><b>CHINA</b> EMKA Industrial Hardware Co. Ltd. Tel. 0086/22/82123759 info@EMKA.cn</p> <p><b>CROATIA</b> EMKA Okovi d.o.o. Tel. 00385/91/5530826 p.teglovic@EMKA.ch</p> <p><b>CZECH REPUBLIC</b> EMKA Kovánie Tel. 00421/2/45259910 miro.EMKA@ba.telecom.sk</p> <p><b>FINLAND</b> EMKA FINLAND Tel. 00358/9/38695530 erkki.valla@EMKA.inet.fi</p> <p><b>FRANCE</b> EMKA France Tel. 0033/254/320862 EMKA@EMKA-france.com</p>	<p><b>GREECE</b> EMKA Hellas Tel. 0030/21041/83000 info@EMKA-hellas.com</p> <p><b>HUNGARY</b> EMKA Beschlagteile Tel. 0036/1/2360032 info@EMKA.hu</p> <p><b>INDIA</b> EMKA India Panel Accessories P Ltd. Tel. 0091/80/26660212 info@EMKA.in</p> <p><b>ITALY</b> EMKA Italia S.r.l. Tel. 0039/045/6471070 info@EMKA.it</p> <p><b>NETHERLANDS</b> EMKA Benelux B.V. Tel. 0031/413/323510 info@EMKA.org</p> <p><b>POLAND</b> EMKA-Polska Sp. z o.o. Tel. 0048/42/6144561 info@EMKA.net</p> <p><b>PORTUGAL</b> EMKA Ferragens Portuguesa Lda. Tel. 00351/214663355 mail@EMKA.pt</p> <p><b>SERBIA and MONTENEGRO</b> Bekto International d.o.o. Tel. 0038/738/241310 bekto@bekto.com</p>	<p><b>SLOVAKIA</b> EMKA Kovánie Tel. 00421/2/45259910 miro.EMKA@ba.telecom.sk</p> <p><b>SWEDEN</b> Emil Krachten Scandinavia AB Tel. 0046/36/314130 info@EMKA.se</p> <p><b>SWITZERLAND</b> EMKA Beschlagteile AG Tel. 0041/33/8260220 info@EMKA.ch</p> <p><b>SPAIN</b> EMKA España S.A. Tel. 0034/91/6432087 mail@EMKA.es</p> <p><b>TURKEY</b> EMKA Kilit Sistemleri Metal San. ve Tic. Ltd. Şti. Tel. 0090/216/4710667 info@emkakilid.com.tr</p> <p><b>UNITED KINGDOM</b> EMKA (UK) Ltd. Tel. 0044/2476/616505 enquiry@EMKA.co.uk</p> <p><b>USA</b> EMKA Inc. Tel. 001/717/9861111 EMKA@emkausa.com</p>
---	--	--

### Agenturen / Agencies

<p><b>AUSTRALIA</b> Lock Focus Pty. Ltd. Tel. 0061/3/97981322 locks@lockfocus.com.au</p> <p><b>CANADA</b> Normont Industrial Hardware, Canada Ltd. Tel. 001/450/6812884 EMKA@normont.com</p> <p><b>CHILE</b> Elektromeister Ltda. Tel. 0056/2/7321640 ab_ekm@tie.cl</p> <p><b>COLOMBIA</b> Comercializadora Becor Ltda. Tel. 0057/1/2350234 gerencia@comercializadorabecor.com</p> <p><b>DENMARK</b> A/S Megatrade Beslag Tel. 0045/44916700 mega@megatrade.dk</p> <p><b>ISRAEL</b> Maham Fasteners Ltd. Tel. 00972/03/9626516 israel@mhm.co.il</p> <p><b>JAPAN</b> IMAO Corporation Tel. 0081/575/285823 info@imao.jp</p> <p>Tochigiya Co.,Ltd. Tel. 0081/3/32542043 support@tochigiya.co.jp</p>	<p><b>ROMANIA</b> Development Consulting Business Tel. 0040/21/2329502 dragos.butoi@dcb.ro</p> <p><b>RUSSIA</b> 000"MK-Electro Tel. 007/81/24492928 info@mk-electro.ru</p> <p><b>SINGAPORE</b> VF Fastening Systems PTE Ltd. Tel. 0065/675/23033 vincent@vffastening.com.sg</p> <p><b>SOUTH AFRICA</b> Enclosure Solutions cc Tel. 0027/11/4212675 info@enclosuresolutions.co.za</p> <p><b>SOUTH KOREA</b> Geo Jeon Co. Ltd. Tel. 0082/314/335508 emkakorea@yahoo.co.kr</p> <p><b>THAILAND</b> Best Port Company Tel. 0066/299/35739 bestport@samarts.com</p> <p><b>VIETNAM</b> Terramar Engineering and Machinery (Pte.) Ltd. Tel. 0084/8/9974089 cam@terramar.com</p>
---	---



**Completely assembled or as a kit for self assembly!**

### EMKA - Gruppe / Group



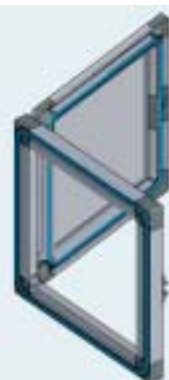
### Headquarters

EMKA Beschlagteile GmbH & Co. KG  
Langenberger Str. 32 · 42551 Velbert · Germany  
Telefon 0049 (0) 20 51 / 2 73-0  
Telefax 0049 (0) 20 51 / 2 73-128  
www.EMKA.com · info@EMKA.com



# EMKA PROflex: flexible solution!

# „Profiled“ advantages



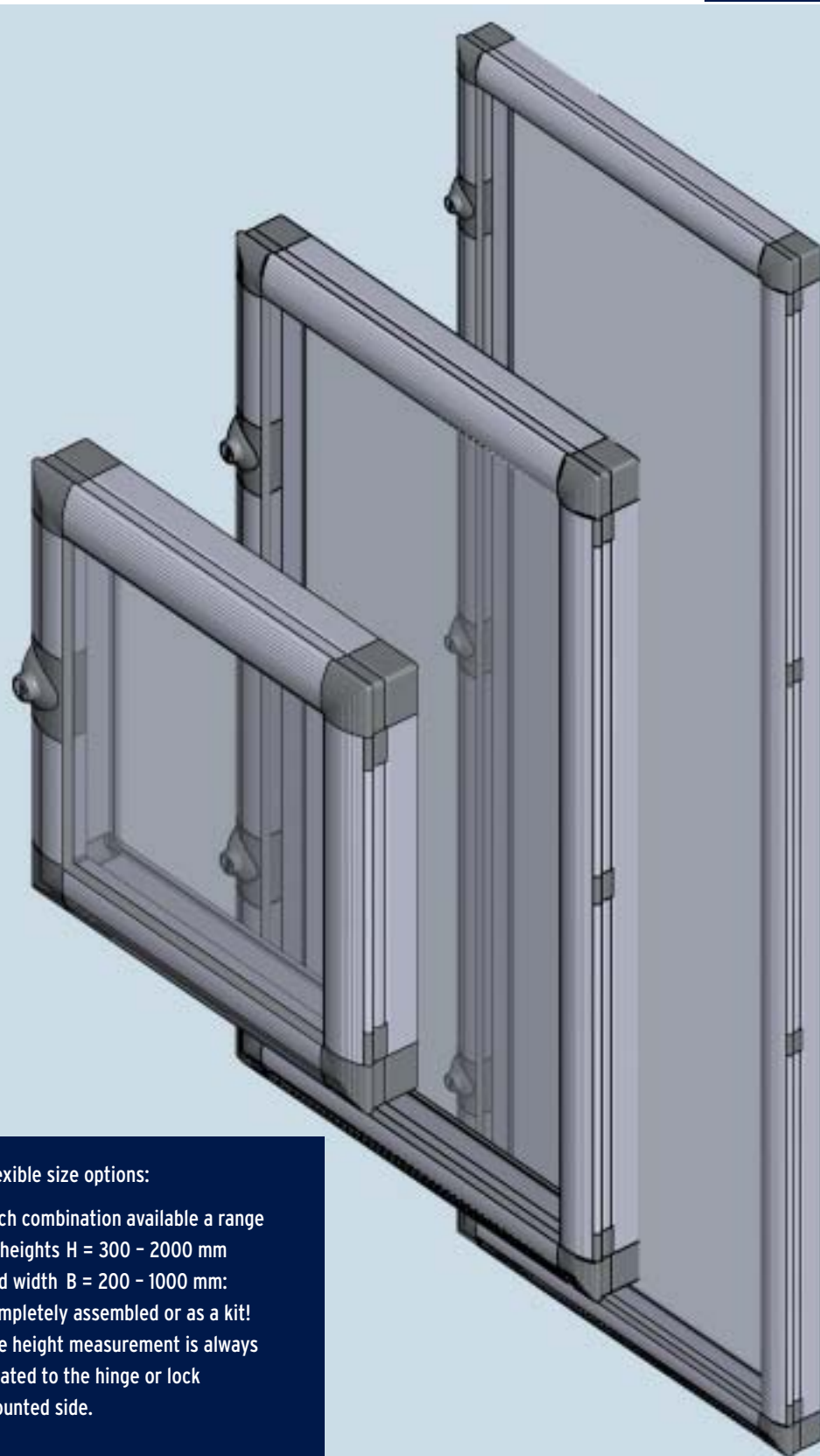
IP 54 on request



Different types of inserts to choose from

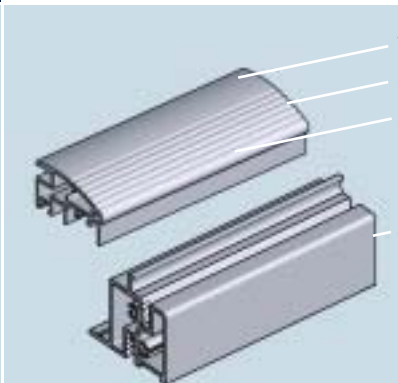


Window also available without the frame



### Flexible size options:

Each combination available a range of heights H = 300 - 2000 mm and width B = 200 - 1000 mm: completely assembled or as a kit! The height measurement is always related to the hinge or lock mounted side.

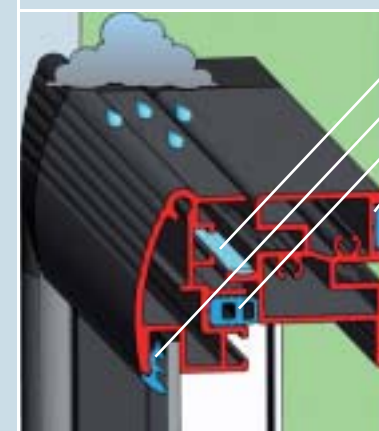


### Entity of design & function

- 1 appealing design
- 2 aluminium profile with high rigidity
- 3 no protruding parts at integrated grip
- 4 special cross-section

### Advantages

- customised measurements
- varied applications possible
- completely assembled or as a kit
- also available with security glass
- rear panel can easily be fitted



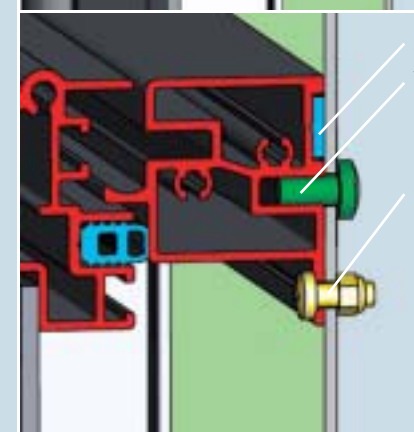
### Profile with integrated „water channels“

Highly compacted special design of profiles:

- 1 integrated „water channels“ to deflect inflow
- 2 self-clamping rubber profile with easy hand push-fit
- 3 window section with slot for seal
- 4 frame profile with slot for gaskets

### Advantages

- high density: protection class IP 54 possible on request
- high rigidity through higher section modulus: optimal cooperation by advantageous cross-section and shape forming
- precise forming by circular profile channel
- quick and easy: only one cut edge for gasket fitting



### Masked fastening

- 1 profile slot designed as a thread slot (for M5, 10mm deep)
- 2 Fixed gasket for frame with high rigidity

### Alternative fastening from front side

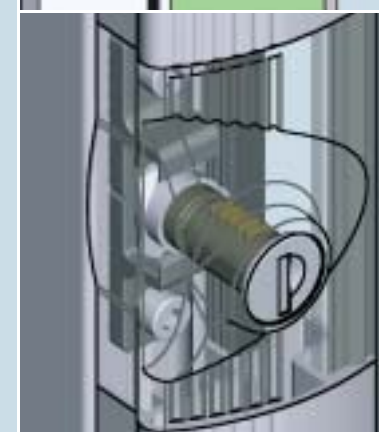
- 3 frame can also be fixed from front size on circular fastening angle

### Advantages

- easy fitting possible from rear side: no horizontal or vertical drilling into frame necessary
- invisible joints

### Advantages

- quick and easy fastening
- handy alternative, if fixing position is not accessible from rear side



### Alternative locking options

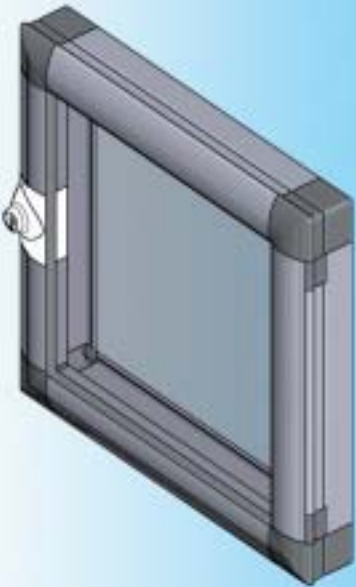
- round cylinder
- 9 different inserts
- wing knob insert
- customized locking version on request

The locks are made for right hand fastening. Convenient: conversion to LH-version simple!

### List of contents

PROflex Solutions and advantages	2 - 3
Aluminium window with frame	4
Locking options	5
Assembling kits	6 - 7
Window without frame	8
Mounting specification	9
Ordering instructions	10 - 11

Available as kit or completely mounted!



Opening angle 180°

IP 54 on request

**Attention:**  
Please specify locking separately!  
( See page 7C-220 )

**Note:**

Thread M5 on rear side for mounting. Alternative mounting from front side. (see page 7C-420)

Polycarbonate glass (outdoor application) or safety glass on request

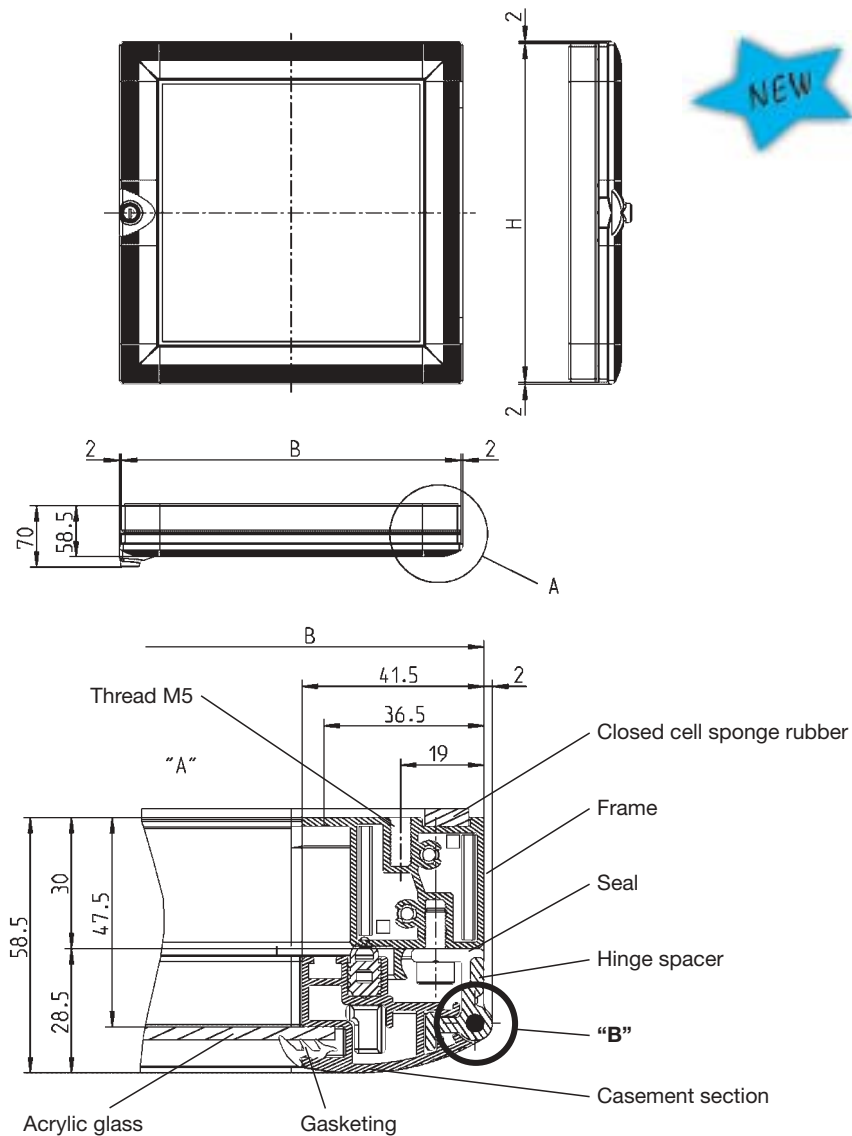
Dimensions outside of window  
Height from 300 to 2000 mm  
Width from 200 to 1000 mm  
**Height = Side of hinge and locking respectively**

Rear panel 3.5 to 4 mm are possible!  
Easy push-in assembling.  
Rear panel size  
H minus 62 mm and  
W minus 62 mm

Further parts see page  
– Locking 7C-220

Mounting measurements  
see page 7C-420

Further order instructions  
see page 7C-520



**Order example:**

The request is for a window frame mounted with the measurement H = 750 mm and B = 520 mm.  
**Attention: Please consider 2 mm projecting length for each side (compare "B")!**

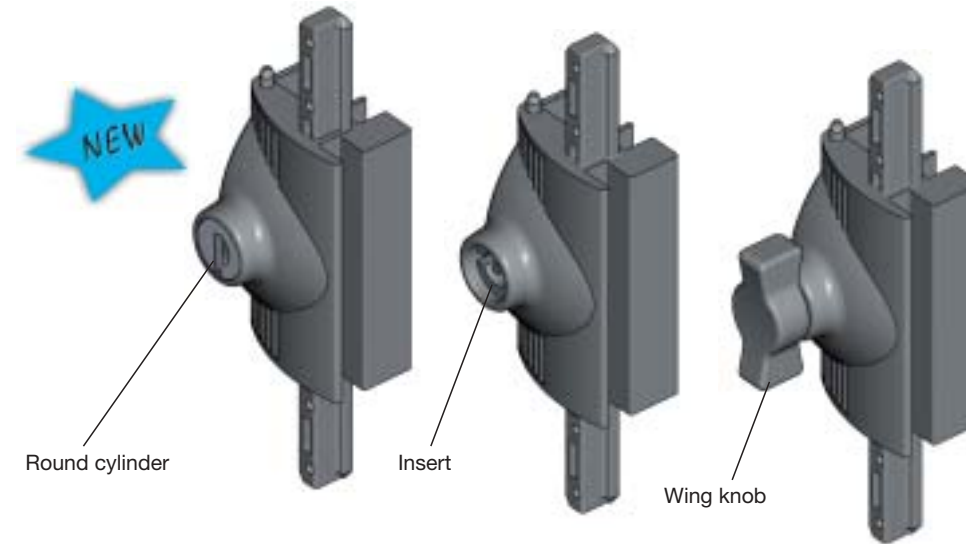
**Please order:**

**Version 1:**  
Aluminium window completely assembled 1210-U (height) - (width) = 1210-U 750-520

**Version 2:**  
Aluminium window kit for self assembly 1210-X (height) - (width) = 1210-X 750-520

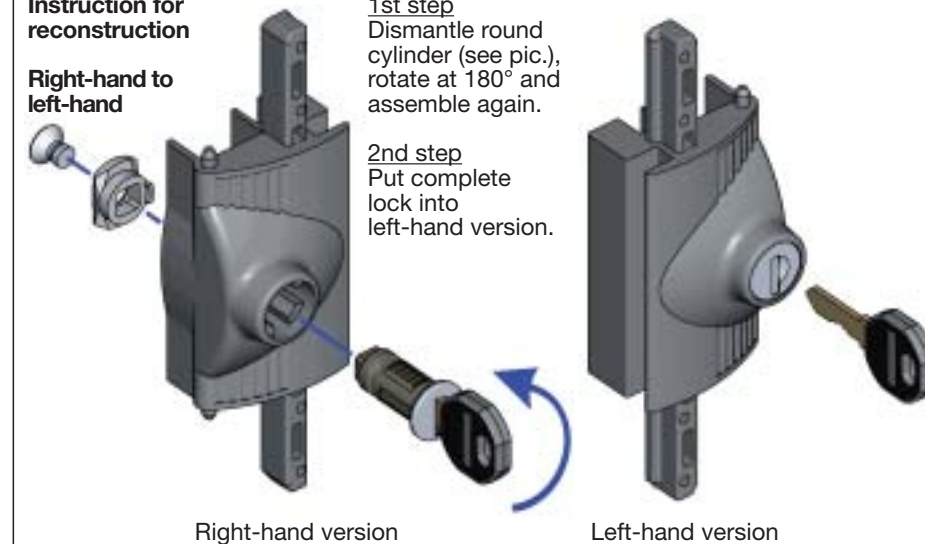
Aluminium window anodized aluminium, corners and hinges zinc die black powder coated, caps polyamide black, axle stainless steel, screws m. s. zinc plated, acrylic glass 3 mm, incl. gasketing and locking (please specify lock separately)

Aluminium window completely assembled, incl. acrylic glass	1210-U ..... - .....
	(see order example)
Aluminium window kit for self assembly, without acrylic glass, confectioned including assembling instructions (Measurement of 3 mm acrylic glass: H minus 65 mm and W minus 65 mm)	1210-X ..... - .....
	(see order example)



**Instruction for reconstruction**

**Right-hand to left-hand**



**1st step**  
Dismantle round cylinder (see pic.), rotate at 180° and assemble again.

**2nd step**  
Put complete lock into left-hand version.

**Order instruction:**

Please only order one kind of lock:  
the number of locks ( 1-3 ) depends on the size of the window!

Lock of aluminium window polyamide black, round cylinder with stainless steel cap and dust cap and dust cover or insert zinc die black powder coated, cam zind die, catch zinc die black, screws m. s. zinc plated, each round cylinder one key silver steel with grip polyamide black

Keyed EK 333	1215-U1
Keyed different	1215-U1-V
<b>Inserts</b>	
Square 6	1215-U2-U322
Square 7	1215-U2-U323
Square 8	1215-U2-U324
Triangular 7	1215-U2-U325
Triangular 8	1215-U2-U326
Double bit 3	1215-U2-U327
Double bit 5	1215-U2-U328
Slot 2 x 4	1215-U2-U329
Slot 2 x 4 coinproof	1215-U2-U739
Wing knob	1215-U2-U78



Locks are designed for a right-hand aluminium window!

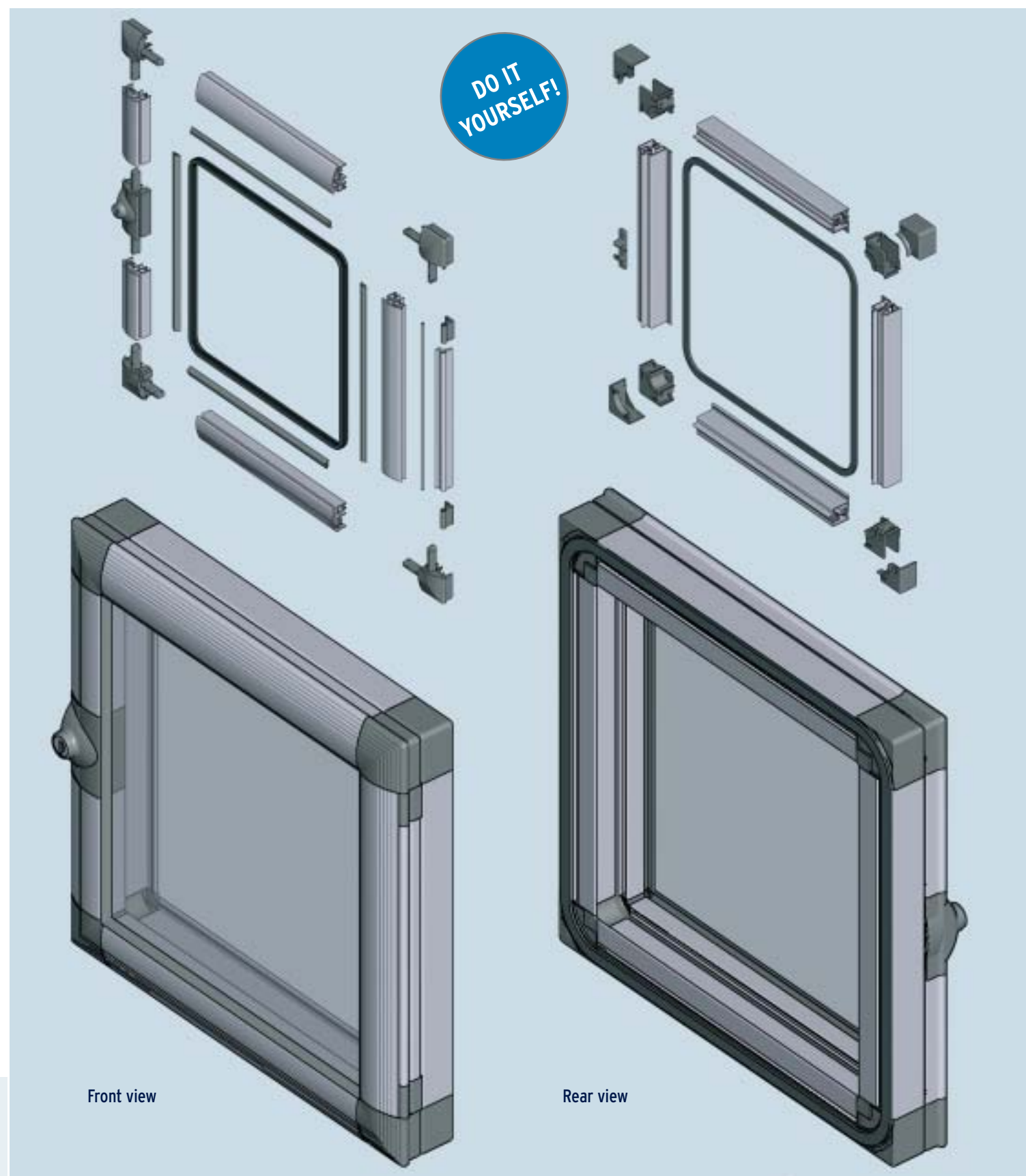
See instruction for reconstruction left-hand version with round cylinder!

**Note:**  
Please order aluminium window separately!

Further parts see page  
– Aluminium window 7C-120  
– Aluminium window without frame 7C-320

Further order instructions  
see page 7C-520

# EMKA PROflex: self-installation kit



### Aluminium window: window with a frame

Complete kit for frame and window (left fig.):

- frame profile, properly cutted to length
- window profiles, properly cutted to length
- corner cleatting set (4 pieces)
- dust caps (4 pieces, self-catching)
- hinges (quantity see table on page 10)
- locks (quantity see table on page 10)
- gasketing
- mounting screws
- assembly instructions

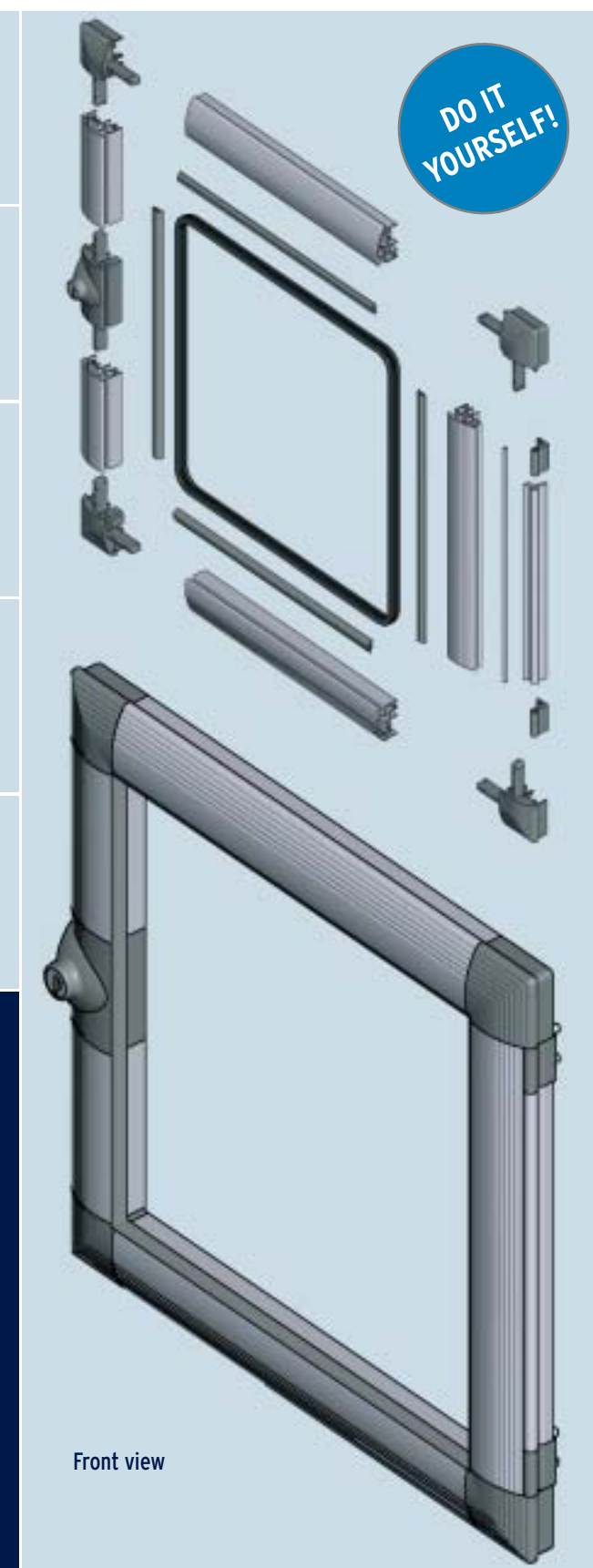
There is no drilling necessary for mounting.  
A kit does NOT include the glazing.  
Please note the order instructions!

### Window without a frame

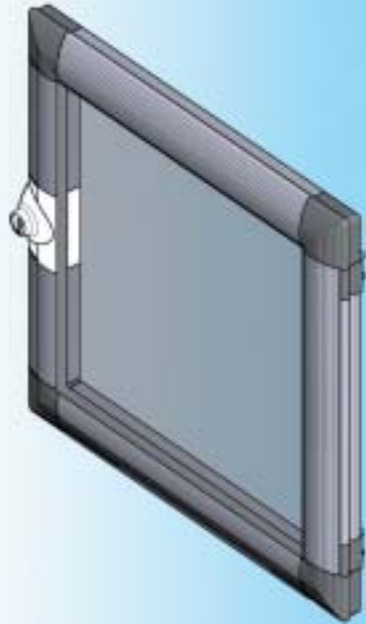
Complete window kit (right fig.):

- window profile, properly cutted to length
- corner cleatting set (4 pieces)
- dust caps (4 pieces, self-catching)
- hinges (quantity see table on page 10)
- locks (quantity see table on page 10)
- gasketings
- mounting screws
- assembly instructions

There is no drilling necessary for mounting.  
A kit does NOT include the glazing.  
Please note the order instructions!



Available as kit or completely assembled!



Opening angle 180°

IP 54 on request

Please specify locking separately!  
(See page 7C-220)

**Note:**

Mounting options see page 7C-420

Polycarbonate glass (outdoor application) or safety glass on request

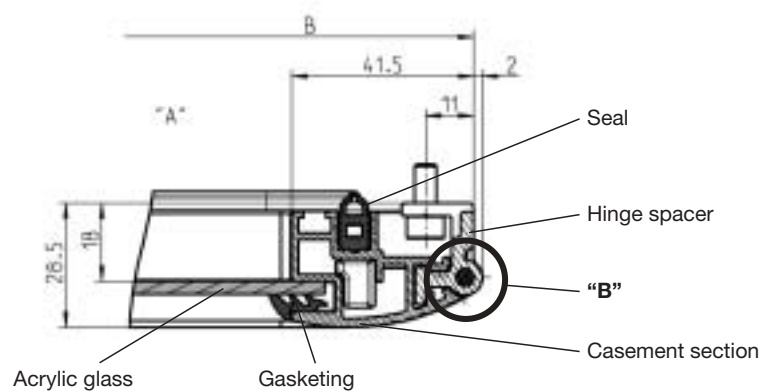
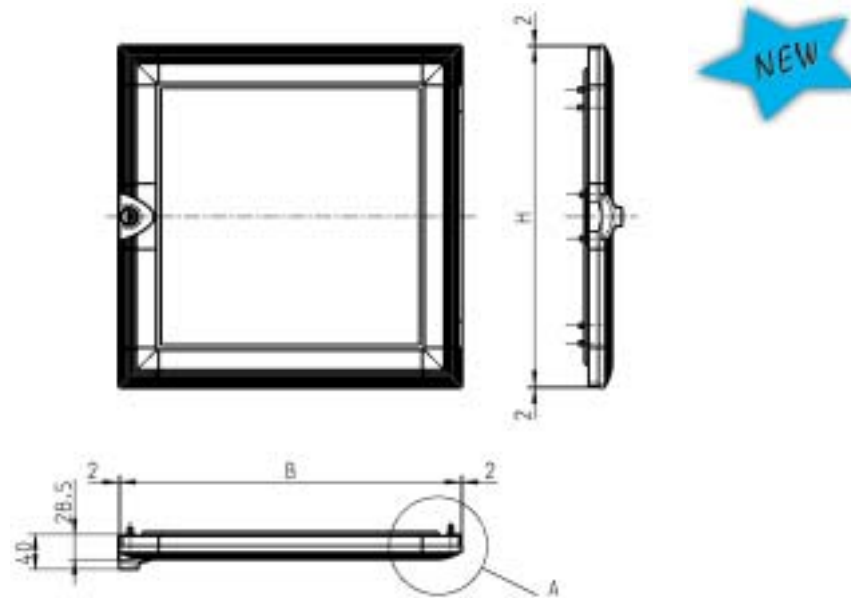
Dimensions outside of window  
Height from 300 to 2000 mm  
Width from 200 to 1000 mm  
**Height = Side of hinge and locking respectively**

Frames like on page 7C-120 are retrofit!

Further parts see page  
– Locking 7C-220

Mounting measurements see page 7C-420

Further order instructions see page 7C-520



**Order example:**

The request is for a window without a frame with the measurement H = 750 mm and B = 520 mm.  
**Attention: Please consider 2 mm projecting length for each side (compare "B")!**

**Please order:**

**Version 1:**  
Window completely assembled 1220-U (height) - (width) = 1220-U 750-520

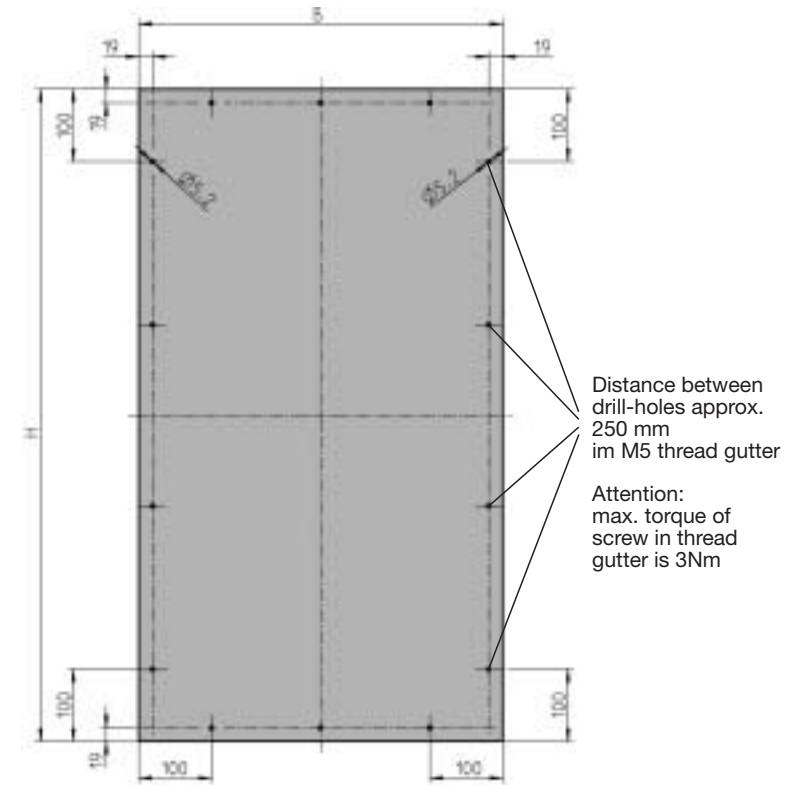
**Version 2:**  
Window kit for self assembly 1220-X (height) - (width) = 1220-X 750-520

Aluminium window anodized aluminium, corners and hinges zinc die black powder coated, axle stainless steel, screws m. s. zinc plated, acrylic glass 3 mm, incl. gasketing and locking (please specify lock separately)

Window completely assembled, incl. acrylic glass	1220-U ..... - ..... (see order example)
Window kit for self assembly, <b>without</b> acrylic glass completely confectioned including assembling instructions (Measurement of 3 mm acrylic glass: H minus 65 mm and W minus 65 mm)	1220-X ..... - ..... (see order example)

Mounting recommendation for aluminium window frame mounted 1210:  
Mounting from rear side.

More fixing points depending on size of the window and according to clients requests.



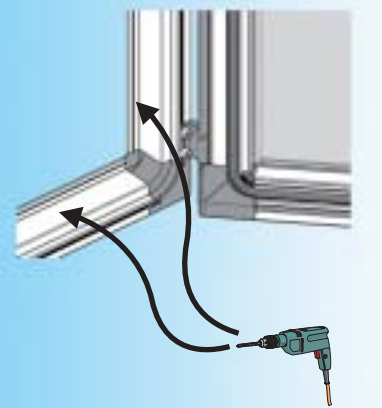
Attachment points rear side of aluminium window

Mounting from rear side



see mounting recommendation

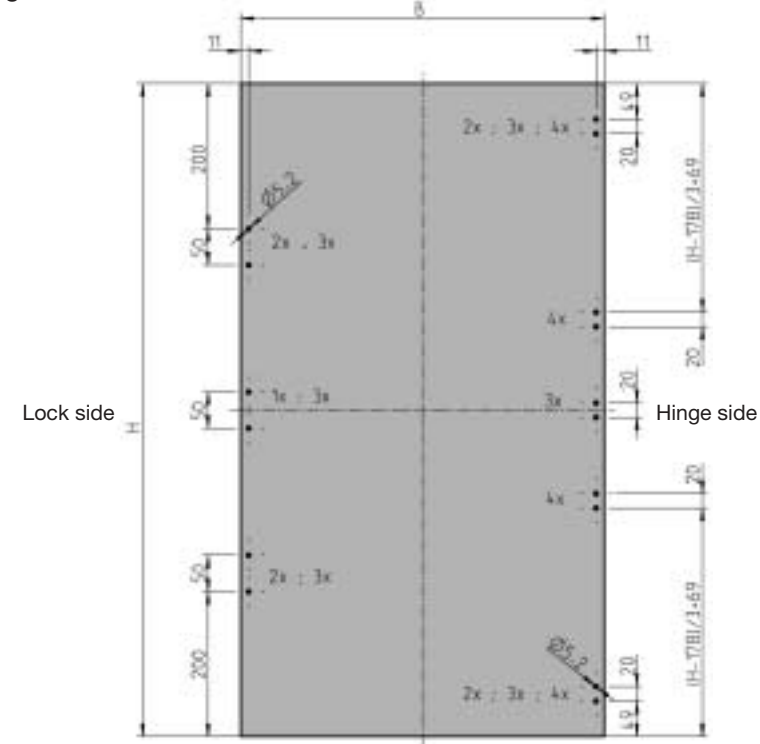
Mounting from front side



Mounting according to clients requests

**Note:**  
Information mounting point 2x, 3x, 4x concern to number of hinges and locks.

Mounting specification for window without a frame 1220  
Mounting from front to rear side



Fixing points on rear side of the casement

Further parts see page  
– Aluminium window 7C-120  
– Aluminium window without frame 7C-320

# Number of locks and hinges

The chosen dimensions determine the number of locks and hinges.

To find out the correct number, please round the dimensions up to the nearest hundred mm.

The used quantities can be found in the table.

Please use the same system for the price list.

E. g. aluminium window completely assembled:

Part No. 1210-U 1080-550 → tabular value 1100-600 → 2 locks and 3 hinges

Part No. 1215-U2-U324 for insert square 8

E. g. aluminium window kit:

Part No. 1210-X 1080-550 → tabular value 1100-600 → 2 locks and 3 hinges

Part No. 1215-U1 keyed EK333



Overview: table for number of locks and hinges

width \ height	300	400	500	600	700	800	900	1000
→ 400	1/2	1/2	1/2	1/2	1/2	a.A.	a.A.	a.A.
→ 500	1/2	1/2	1/2	1/2	1/2	a.A.	a.A.	a.A.
→ 600	1/2	1/2	1/2	1/2	1/2	1/2	a.A.	a.A.
→ 700	1/2	1/2	1/2	1/2	1/2	1/2	a.A.	a.A.
→ 800	1/2	1/2	1/2	1/2	1/2	1/2	a.A.	a.A.
→ 900	2/3	2/3	2/3	2/3	2/3	2/3	2/3	a.A.
→ 1000	2/3	2/3	2/3	2/3	2/3	2/3	2/3	2/3
→ 1100	2/3	2/3	2/3	2/3	2/3	2/3	2/3	2/3
→ 1200	2/3	2/3	2/3	2/3	2/3	2/3	2/3	2/3
→ 1300	2/3	2/3	2/3	2/3	2/3	2/3	2/3	2/3
→ 1400	2/3	2/3	2/3	2/3	2/3	2/3	2/3	2/3
→ 1500	3/4	3/4	3/4	3/4	3/4	3/4	3/4	3/4
→ 1600	3/4	3/4	3/4	3/4	3/4	3/3	3/4	3/4
→ 1700	3/4	3/4	3/4	3/4	3/4	3/4	3/4	3/4
→ 1800	3/4	3/4	3/4	3/4	3/4	3/4	3/4	3/4
→ 1900	3/4	3/4	3/4	3/4	3/4	3/4	3/4	3/4
→ 2000	3/4	3/4	3/4	3/4	3/4	3/4	3/4	3/4

Number of locks

Number of hinges

# Order instructions

Step 1  
Type?



Aluminium window with frame and window:  
Part No. starts with 1210-



Window:  
Part No. starts with 1220-

Step 2  
Completely assembled or a kit?



U = completely assembled

Both types can be ordered completely assembled or as a kit.  
The letter in the part No. identify the desired delivery condition.



X = kit

DO IT YOURSELF!

Step 3  
Dimensions

The desired dimensions make the part No. complete:  
Height dimension in mm - width dimension in mm  
The height measurement is always related to the hinge or lock mounted sides.

Examples



1210-U height-width  
1210-U 750-520  
Page 7C-120



1210-X height-width  
1210-X 750-520  
Page 7C-120

DO IT YOURSELF!



1220-U height-width  
1220-U 750-520  
Page 7C-320



1220-X height-width  
1220-X 750-520  
Page 7C-320

DO IT YOURSELF!

Step 4  
Selection of the insert



keyed  
EK 333



inserts

wing knob insert  
Overview on page 7C-220

Fastening advice

Fastening advice for aluminium windows with frame see page 7C-420 (top)

Fastening advice for window only see page 7C-420 (bottom)

Order instructions

Attention:

Kit will be delivered without glazing!

DO IT YOURSELF!

Attention:

Kit will be delivered without glazing!

DO IT YOURSELF!