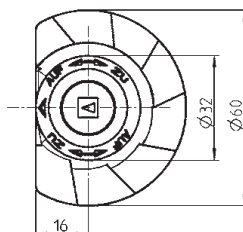
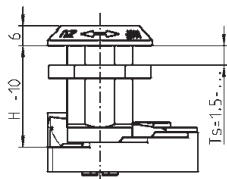
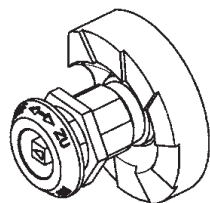


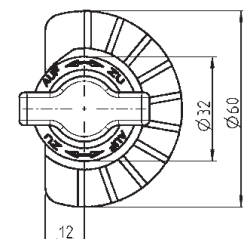
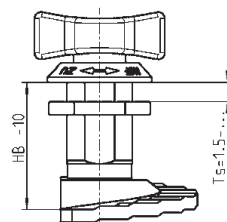
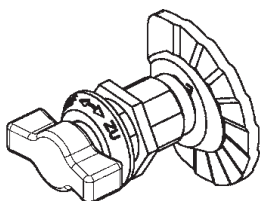
Quarter turn with stepped cam

PROGRAM 1000

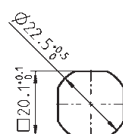
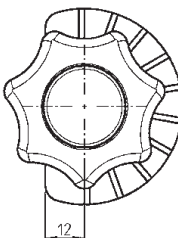
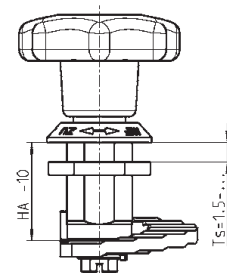
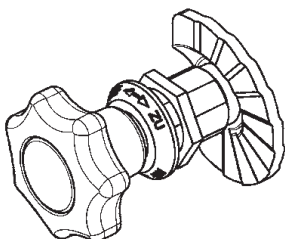
Version A



Version B



Version B



Cut out



Housing with 270° stop

Stepped cam

Version A m.s. zinc plated, without stop 1000-127

m.s. zinc plated, with stop 1000-244

Version B zinc die, with stop 1000-387

Housing zinc die with screw and nut, m.s. zinc plated

Ts	H	HA	HB	Housing zinc die		with adapter zinc die	Spacer zinc die
				chrome pl.	black powder coated	(Flush mounted insert)	for 5 mm tolerance and screw zinc plated
1,5 up to							
8	19	19	27	1000-U157	1000-U231	no need	1000-U539
20	31	31	39	1000-U158	1000-U232	1000-U164	1000-U540
26	37	37	45	1000-U247	1000-U250	1000-U198	1000-U541
30	41	41	49	1000-U159	1000-U233	1000-U165	1000-U542
40	51	51	59	1000-U160	1000-U234	1000-U166	1000-U543

Advice:
Quarter turn-Assembling 1B-105

Further parts see page
 - Insert 1B-140
 - IP65 or IP 66 1B-140
 - Accessories from 1C-320
 - Escutcheon 3B-140
 - Key 12B-120